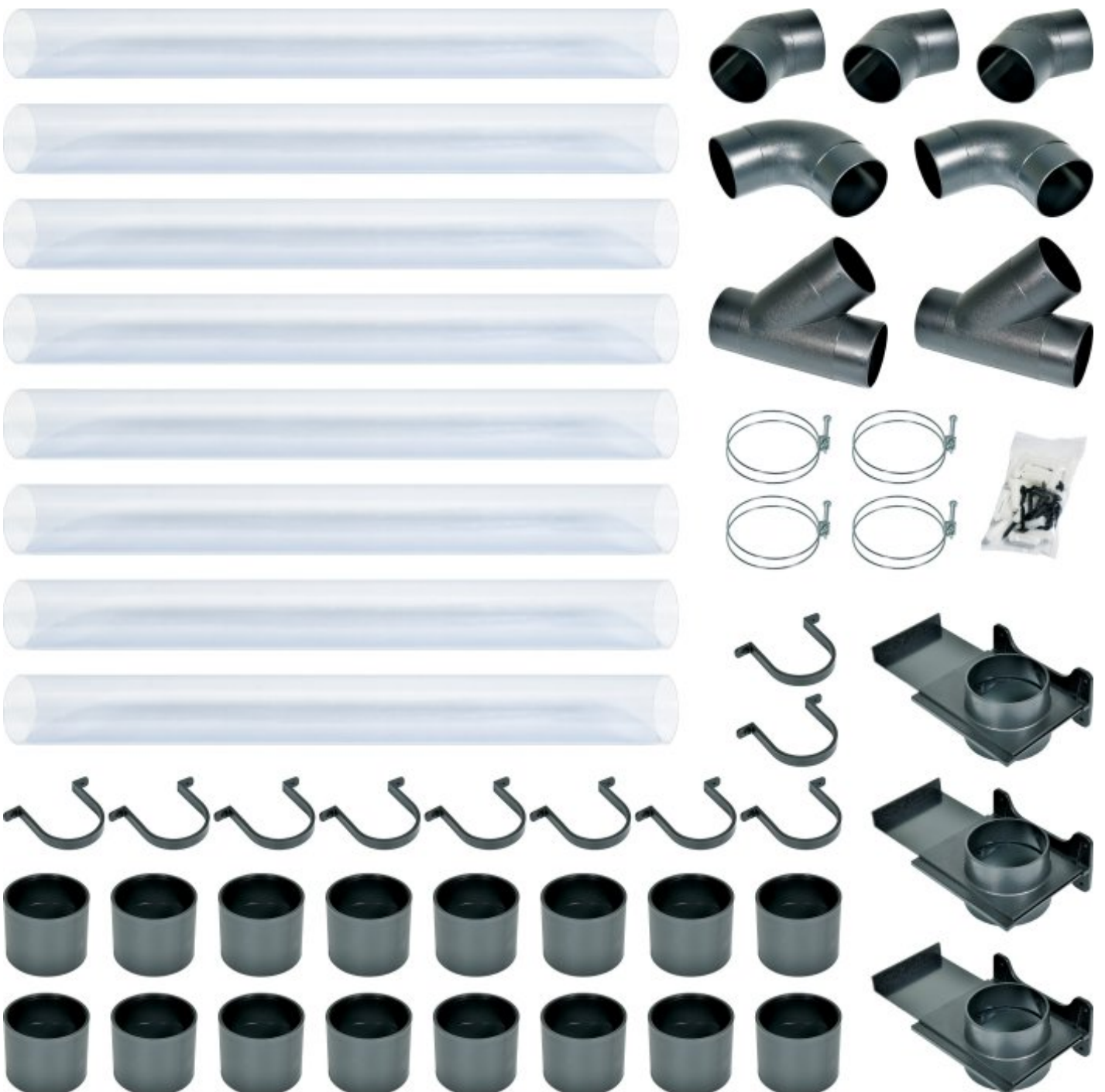


**HAFCO DCK-200W**



**Wall Mounted Wood Dust Extraction Ducting Kit**

**Ø100mm (4")**



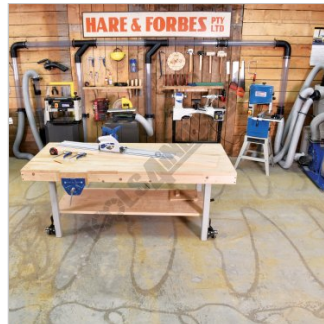
## HAFCO Wall Mounted Wood Dust Extraction Ducting Kit DCK-200W



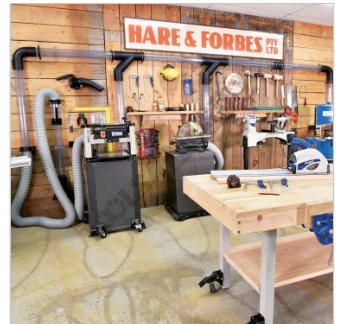
Shown Setup and Kit Components



Quantity Per Piece in Kit



Shown Set Up with Optional Machines and Accessories



Shown Set Up with Optional Dust Hose and Access



8 x 915mm Lengths of 100mm Clear Tubing



10 x Tube Hanging Brackets Top View



3 x 45 Degree Elbows Top View



2 x 90 Degree Elbows Top View



16 x Joiners Top View



3 x Wall Mount Blast Gates Open



2 x Y Connectors Top View



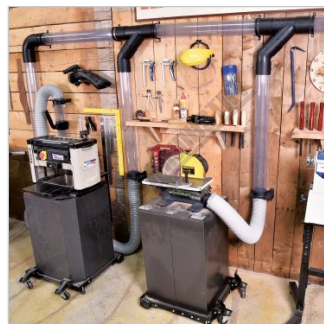
4 x Hose Clamps



Fixing Accessories



Shown Set Up With Optional Dust Collector



Shown Set Up With Optional Accessories



Gate in Open Position

## HAFCO Wall Mounted Wood Dust Extraction Ducting Kit DCK-200W



Y Connector Joined to 45 Degree Elbow



90 Degree Elbow

### Description

This Ø100mm wall mounted ducting kit is the ideal solution to getting your dust collection hose off the floor.

All parts clip together for fast assembly and a good range of components are included to connect up to 3 machines to a dust extractor.

### Includes

- 8 x 915mm lengths of Ø100mm clear tubing
- 3 x 100mm wall mount blast gates
- 3 x 100mm 45° elbows
- 2 x 100mm 90° elbows
- 2 x 100mm "Y" connectors
- 16 x 100mm Joiners
- 4 x 100mm hose clamps
- 10 x Tube hanging brackets and mounting hardware
  
- Please Note:
- We strongly recommend that you "Earth" this ducting kit to each piece of equipment and the dust collector itself to minimise the risk of static build-up that can result in fire.

### Specifications

<b>ORDER CODE</b>	W3447
<b>MODEL</b>	DCK-200W
<b>Type</b>	Wall Mounted Dust Extraction Kit
<b>Application</b>	Timber
<b>Size</b>	Ø100mm Attachments
<b>Suits</b>	All Wood Dust Collectors
<b>Nett Weight (kg)</b>	12.5