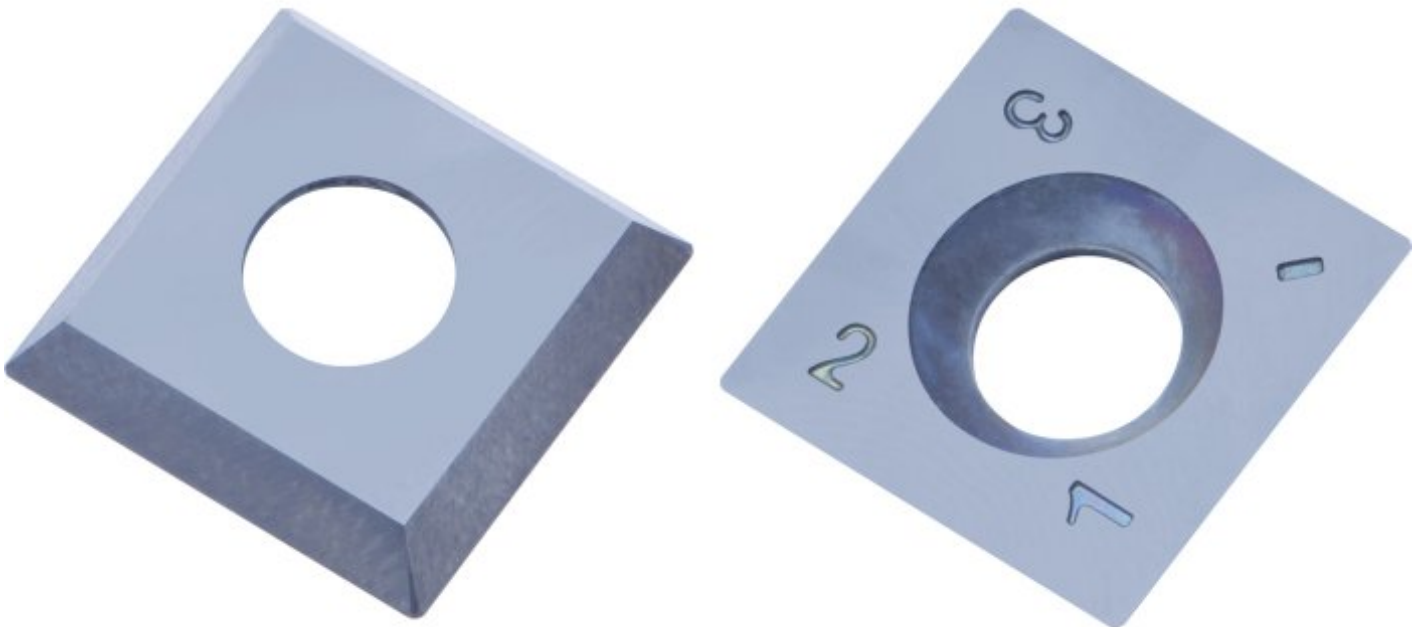


HAFCO-WOODMASTER

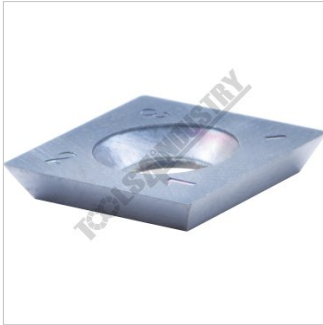


15mm - Square Carbide Insert

2 Piece Pack



HAFCO-WOODMASTER 15mm - Square Carbide Insert



Low View

Description

Replacement square tungsten carbide inserts are designed to suit carbide woodturning chisels. Ideal for roughing, shaping and general-purpose turning, this durable cutter provides a long service life and delivers a clean, smooth finish on a wide range of timbers.

Unlike traditional HSS tools, the carbide insert requires no sharpening. Simply rotate the cutter to a fresh edge when dull, extending tool life and reducing downtime. When all cutting edges have been used, replace the insert and continue turning.

Features

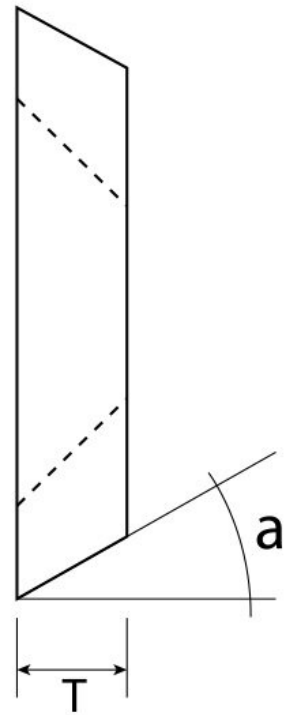
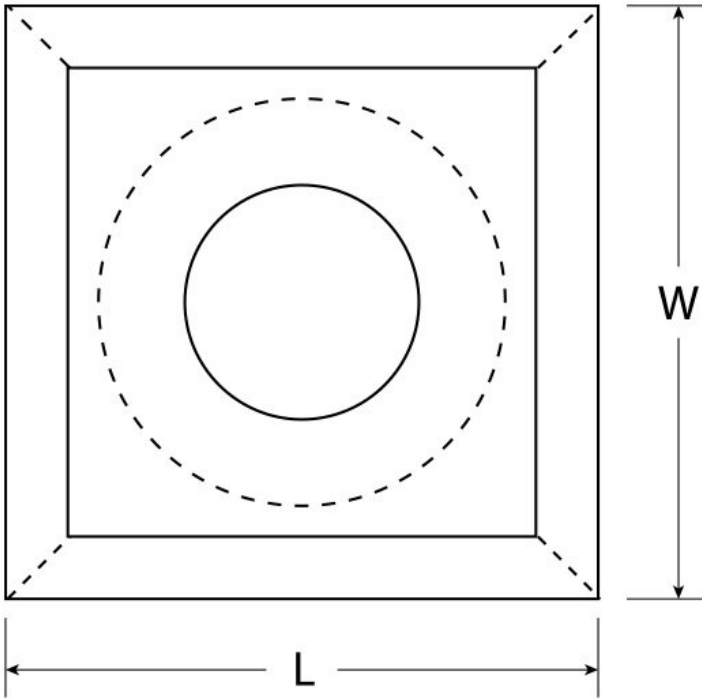
- Square tungsten carbide insert
- Suits carbide woodturning chisel sets
- Four usable cutting edges for extended life
- Produces a smooth, clean finish
- No sharpening required
- Rotate cutter when dull for a fresh cutting edge
- Ideal for roughing, shaping and general turning applications
- Supplied as a convenient 2-piece pack

Includes

- 2 Piece Pack

Specifications

HAFCO-WOODMASTER 15mm - Square Carbide Insert



HAFCO-WOODMASTER 15mm - Square Carbide Insert

ORDER CODE

HAFCO-WOODMASTER 15mm - Square Carbide Insert

W30487

MODEL	~
Type	Square Carbide Insert
No. of Piece	2
Thread Size	~
D	~
L (mm)	15
W (mm)	15
T (mm)	2.5
a (deg)	30°
Suits	Wood Turning Tools - Insert Type