

METALMASTER MMF-30



Coolant Mist Filter

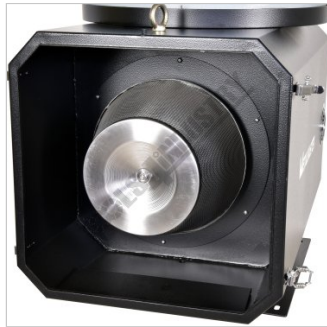
29m³/min Flow rate



METALMASTER Coolant Mist Filter MMF-30



Differential Pressure Gauge



Cone Filter



Accessories



Hose Inlet



Side View



Rear View



Side View

Description

Upgrade Your CNC Machine with the Ultimate Coolant Mist Filtration System kit!

Efficient Mist Filtration:

Our system efficiently captures and removes 99.95% of coolant mist, keeping your workspace clean and safe. No more slippery floors, or compromised air quality.

Washable Pre-Filter:

Our filtration system starts with a washable pre-filter that traps swarf or large particles, extending the life of your main filter and saving you money on replacements.

Quick Release Stainless Steel Cone Filter:

Designed for efficiency and durability, our stainless steel cone filter is easily removable for cleaning or replacement. No more hassle when maintaining your CNC machine's filtration system!

H13 HEPA Post Filter:

The fundamental Key of our system, the H13 HEPA Post filter, is engineered to perfection. It excels at reducing particulate matter in your workshop air, ensuring a healthier and safer working environment for you and your team. Up to 99.95% of Fine particles that could previously escape with standard filters are now captured, preventing them from transferring into your workshop environment

Minimize Coolant Odours:

Thanks to our advanced H13 HEPA filter, unpleasant coolant smells are a thing of the past. Say goodbye to the discomfort of lingering odours in your workshop. Breathe easy and work comfortably! Filter out what standard type filters cannot !

METALMASTER Coolant Mist Filter MMF-30

Why Choose a METALMASTER Coolant Filter?

Proven Performance:

Our filtration system has been tested and trusted by CNC machining professionals.

Cost-Effective:

Save money on collecting and returning valuable cutting coolant to your system.

Healthier Workspace:

Protect your health and the health of your team by reducing airborne particulate matter and nasty odours

Features

- METALMASTER Coolant Filter Kit includes:
- Machine side adaptor - Ø200mm
- Washable pre filter
- Rubber mounting feet - Mount on machine or optional stand.
- PVC Inlet hose - Ø200mm with 2 x Clamps
- Waste Oil return drain hose
- DOL Start / Stop switch with cables
- High Performance H13 HEPA post filter
- Kit is designed to be powered from 220v 3Phase CNC machine power.

Specifications

ORDER CODE	W2731
MODEL	MMF-30
Maximum Flow Rate (M3/min)	29
Static Pressure (Kpa)	1.66
Suction Inlet Hose (Diameter)	200
Operating Noise (dBA)	68
Applicable filtration space - up to (L x W x H) (M3)	18
Weight (Kg)	65