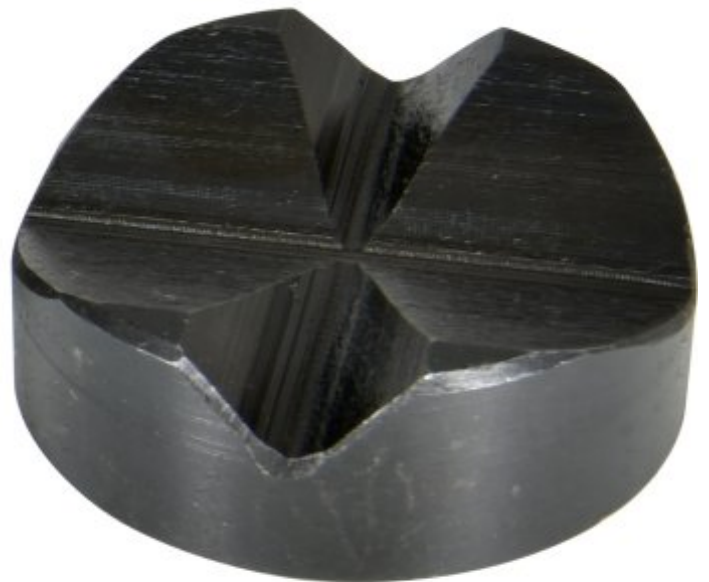
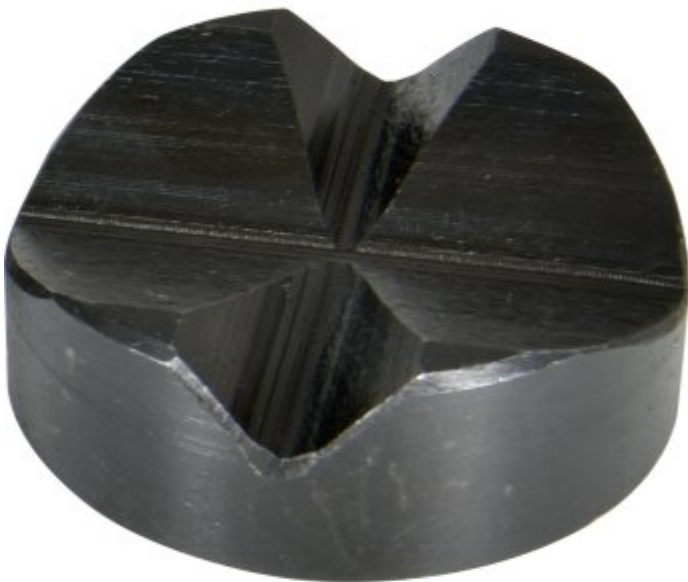


**HAFCO SCVM-90135**

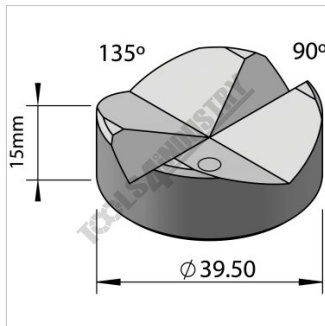


**Magnetic Cross Type 90 / 135° V-Pad (4 Piece Pack)**

**Suits welding tables & swivel clamp pads**



## HAFCO Magnetic Cross Type 90 / 135° V-Pad (4 Piece Pack) SCVM-90135



Dimensions



4 Piece Set

### Description

Magnetic V-Pads are used as a support between the table surface and round workpieces, plus being magnetic, can be used anywhere on the tables or with a fixture accessory. The design of the magnetic base allows for use in any position on the welding table when your workpiece does not line up with one of the table or fixture holes giving you endless flexibility in your clamping tasks. It also can be used on the swivel pad of a welding table clamp when clamping round material.

### Features

- Use in any position on a welding table or fixture accessory
- Use on the swivel pad of a welding table clamp
- 90 Degree V to hold up to 20mm round or square on its edge
- 135 Degree V to hold up to 50mm round
- CNC machined surfaces to ensure precision tolerances
- Burnished finish surface treatment to prevent rust

### Specifications

<b>ORDER CODE</b>	W08506
<b>MODEL</b>	SCVM-90135
<b>Suits Table Hole Diameter (Ø)</b>	~
<b>Type</b>	Magnetic Cross V-Pad
<b>Degree Opening</b>	90 + 135 Degree
<b>Size</b>	~
<b>Quantity Per Pack (No.)</b>	4
<b>Suits</b>	Welding Tables & Swivel Clamp Pads
<b>Nett Weight (kg)</b>	1.0