

**METALMASTER WT28-LFK2**



**Table & Accessory Lifting Kit**

**1000kg WLL Total Capacity as a pair**



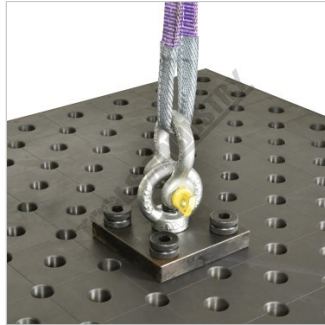
## METALMASTER Table & Accessory Lifting Kit WT28-LFK2



Table-accessory lifting kit



Lock position



Shown using optional shackle and strap



Shown using optional lifting kit

### Description

Use to assist in lifting of our METALMASTER M28 Pro Series welding tables, riser blocks & any large or heavy table accessories. The kit comes standard with 2pcs of 4-hole lifting plates with M24 Eye nuts along with 8pcs of ball lock pins to secure the plates in place making them the perfect addition to your welding table.

### Features

- Heavy steel construction
- Fast & easy way to securely lift fixture elements to a table
- CNC machined surfaces to ensure precision tolerances
- Burnished finish surface treatment to prevent rust
- 1000kg WLL as a pair or 500kg WLL for each
- Suits Ø28mm Welding Tables Holes
- It is recommended that a minimum of 2 pairs (4pcs) of the lifting plates be used when lifting WT28-3015N - 3000 x 1500mm M28 Pro Welding Tables

### Specifications

<b>ORDER CODE</b>	W08290
<b>MODEL</b>	WT28-LFK2
<b>Type</b>	Lifting Kit
<b>Size</b>	1000kg WLL (500kg WLL each)
<b>Quantity Per Pack (No.)</b>	2
<b>Suits</b>	Ø28mm Table Holes
<b>Nett Weight (kg)</b>	~