

**SAFEWAY PJ-160V**



**Safeway Standard Hardened Jaws - 160mm**



**SAFEWAY Safeway Standard Hardened Jaws - 160mm PJ-160V**

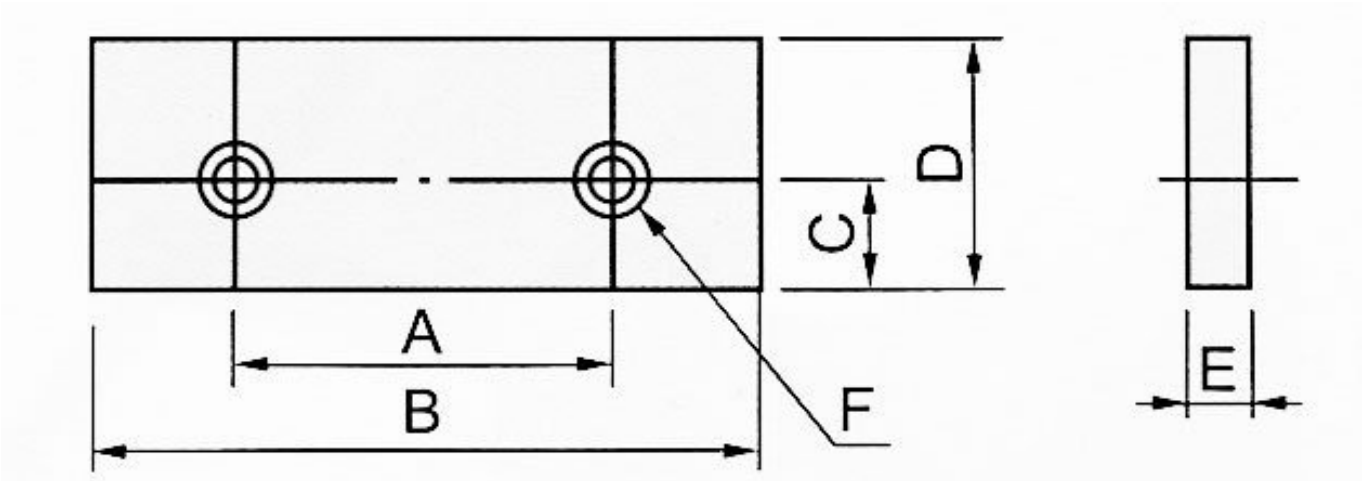
**Description**

Hardened jaws suitable for clamping work pieces were the finished surface is smooth and needs to be protected.

**Features**

- Hardened Jaws to HRC55° -58°
- Supplied in pairs

**Specifications**



<b>ORDER CODE</b>	V3203
<b>MODEL</b>	PJ-160V
<b>Type</b>	Standard Jaws
<b>A (mm)</b>	90
<b>B (mm)</b>	160
<b>C (mm)</b>	25
<b>D (mm)</b>	58
<b>E (mm)</b>	15
<b>F (mm)</b>	M10 x 20 Long
<b>G (mm)</b>	~
<b>H (mm)</b>	~
<b>J (mm)</b>	~
<b>K (mm)</b>	~
<b>L (mm)</b>	~
<b>M (mm)</b>	~
<b>N (mm)</b>	~
<b>Nett Weight (kg)</b>	4