

HAFCO TDL-287



Deluxe Series Roller Cabinet

7 Drawers



HAFCO Deluxe Series Roller Cabinet TDL-287



Drawers Open



Drawer Open Shown Paper Towel Holder



Full View Shown with Paper Towel Holder



Top View



Stainless Steel Top Tray



Paper Towel Holder



Holder Shown with Paper Towel



Various Tool Holders



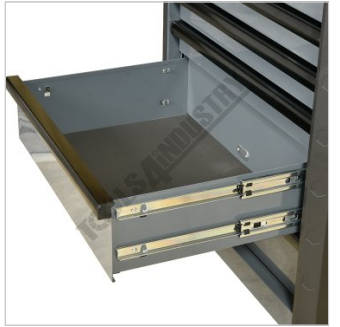
Push Handle



Key Lockable



Ball Bearing Slide Drawers



Dual Ball Bearing Slides to Deeper Drawers



Protective Drawer Liners



2 x Swivel Brake Wheels



2 x Fixed Wheels



Shown with Optional TDL-284 Tool Chest

HAFCO Deluxe Series Roller Cabinet TDL-287



Shown with Optional TDL-284 Tool Chest - Lid Open



Shown with Optional TDL-284 Tool Chest - Lid Closed

Description

Rev up your workspace with the HAFCO Deluxe Series – the ultimate toolbox solution for workshop pros and DIY enthusiasts alike. Cloaked in sleek Nardo Gray, these rugged toolboxes are as tough as they look.

Choose from sizes ranging from 28 to 44 inches, available in stackable roller cabinets and tool chest combinations or sold separately. The Deluxe Series is packed with features such the corner armor for maximum durability, while roller cabinets flaunt a stainless-steel tray top – perfect for small teardowns and dirty parts. The moulded tools and parts holders will keep everything where you left them, while handy side storage bins add extra dimensions to your storage solutions. The soft-close drawers with ball-bearing slides and foam mat liners keep your tools clean and safe. Tool chests feature twin gas-struts, and the complete range is key lockable.

Sold only in sleek Nardo Gray with gloss black handles – these toolboxes combine style with substance. The HAFCO Deluxe Series – the ultimate DIY garage or workshop solution.

TDL-287 DIMENSIONS - (WIDTH x DEPTH x HEIGHT) [?]

Overall size: [?] 722 x 482 x 848mm

Overall with casters: [?] 722 x 482 x 1013mm

Package size: [?] 770 x 530 x 990mm

5 drawers: [?] 570 x 410 x 75mm (30kg Per Drawer)

2 drawers: [?] 570 x 410 x 153mm (50kg Per Drawer)

Features

- 7 Drawer Roller Cabinet
- Corner armor for maximum strength
- Extra side storage
- Stainless-steel tray-top
- Moulded tool and part holders
- Paper Towel Holder
- Additional storage bins on side
- Ball bearing slides on all drawers
- Soft close drawers with retaining system
- Over sized handle can be mounted on either side
- Brakes on front wheels
- Foam lined drawers
- Key lockable

HAFCO Deluxe Series Roller Cabinet TDL-287

Specifications

ORDER CODE	T6861
MODEL	TDL-287
Type	Roller Cabinet
Series	Deluxe Series
Drawers (No.)	7
Overall Dimensions (W x D x H) (mm)	722 x 482 x 1013
Nett Weight (kg)	68