

**HAFCO TDL-284**



**Deluxe Series Tool Chest**

**4 Drawers and a hutch**



## HAFCO Deluxe Series Tool Chest TDL-284



Lid open



T6860



Top view



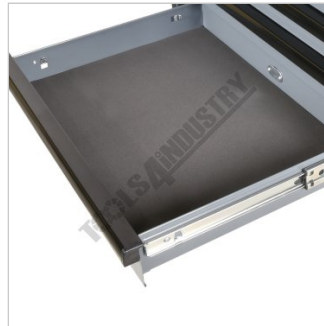
Gas strut lid



Side storage



Key lockable



Protective drawer liners



Ball Bearing Slide Drawers



Shown with Optional TDL-287 Roller Cabinet



Shown with Optional TDL-287 Roller Cabinet - Lid Open



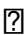
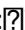
Shown with Optional TDL-287 Roller Cabinet - Lid Closed

### Description

Rev up your workspace with the HAFCO Deluxe Series – the ultimate toolbox solution for workshop pros and DIY enthusiasts alike. Cloaked in sleek Nardo Gray, these rugged toolboxes are as tough as they look.

Choose from sizes ranging from 28 to 44 inches, available in stackable roller cabinets and tool chest combinations or sold separately. The Deluxe Series is packed with features such as the corner armor for maximum durability, while roller cabinets flaunt a stainless-steel tray top – perfect for small teardowns and dirty parts. The moulded tools and parts holders will keep everything where you left them, while handy side storage bins add extra dimensions to your storage solutions. The soft-close drawers with ball-bearing slides and foam mat liners keep your tools clean and safe. Tool chests feature twin gas-struts, and the complete range is key lockable.

Sold only in sleek Nardo Gray with gloss black handles – these toolboxes combine style with substance. The HAFCO Deluxe Series – the ultimate DIY garage or workshop solution.

TDL-284 DIMENSIONS - (WIDTH x DEPTH x HEIGHT)   
Overall size:  722 x 482 x 465mm

## HAFCO Deluxe Series Tool Chest TDL-284

Package size: 800 x 548 x 550mm  
4 drawers: 570 x 410 x 75mm (30kg Per Drawer)

### Features

- 4 Drawer Tool Chest with large top lid
- Corner armour for maximum strength
- Extra side storage
- Includes two power cord access holes with rubber grommets
- Two gas struts lifting the lid
- Ball bearing slides on all drawers
- Heavy duty handles to make lifting safe and easy
- Foam lined drawers
- Soft close drawers with retaining system
- Key lockable lid and drawers

### Specifications

<b>ORDER CODE</b>	T6860
<b>MODEL</b>	TDL-284
<b>Type</b>	Tool Chest
<b>Series</b>	Deluxe Series
<b>Drawers (No.)</b>	4
<b>Overall Dimensions (W x D x H) (mm)</b>	722 x 482 x 465
<b>Nett Weight (kg)</b>	39