

HAFCO TBRS-25



Manual Tube Bender - Round & Square

Ø9.52 - Ø22.22mm Round Tube Capacity, 19.05 & 25.4mm Square Tube Capacity



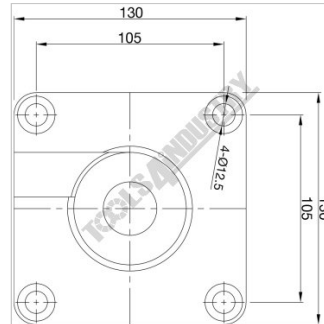
HAFCO Manual Tube Bender - Round & Square TBRS-25



Carry Case



Bar Bender



Base Dimensions

Description

This Hafco TBRS-25 tube bending kit has everything that you need to make smooth bends in round & Square tubes up to 1.2mm maximum wall thickness. Firstly, mount the cast iron base securely onto your work bench top or clamp it into a bench vice, then you are ready to begin your bend.

This great package is capable of bending round tubes from $\text{Ø}9.52$, $\text{Ø}12.7$, $\text{Ø}14.29$, $\text{Ø}15.87$, $\text{Ø}19.05$ & $\text{Ø}22.22\text{mm}$, and square tube from 19.05 & 25.4mm. Everything is all neatly packed into a handy storage carry case for your convenience,

Features

- Suitable for 1.2mm wall thickness in mild steel
- Cast Steel Round formers included: $\text{Ø}9.52$, $\text{Ø}12.7$, $\text{Ø}14.29$, $\text{Ø}15.87$, $\text{Ø}19.05$, $\text{Ø}22.22\text{mm}$
- Cast Steel Square formers included: 19.05 & 25.4mm

Includes

- Cast Steel Round Tube Formers:
 - D = $\text{Ø}9.52\text{mm}$ OD - R = 47.5mm Centreline radius
 - D = $\text{Ø}12.7\text{mm}$ OD - R = 57.5mm Centreline radius
 - D = $\text{Ø}14.29\text{mm}$ OD - R = 67.5mm Centreline radius
 - D = $\text{Ø}15.87\text{mm}$ OD - R = 77.25mm Centreline radius
 - D = $\text{Ø}19.05\text{mm}$ OD - R = 88.25mm Centreline radius
 - D = $\text{Ø}22.22\text{mm}$ OD - R = 107.25mm Centreline radius
- Cast Steel Square Tube Formers:
 - H = $\text{Ø}19.05\text{mm}$ OD - L = 85mm Internal radius
 - H = $\text{Ø}25.4\text{mm}$ OD - L = 92.5mm Internal radius

HAFCO Manual Tube Bender - Round & Square TBRS-25

Specifications

ORDER CODE	T055
MODEL	TBRS-25
Material (Type)	Tube
Material Section (Type)	Round & Square
Machine (Type)	Manual
Hydraulic Jack Size (Tonne)	~
Round Pipe Range (NB) - Mild Steel (inch / mm)	~
Round Tube Range (OD) - Mild Steel (inch / mm)	Ø9.52 - Ø22.22
Square Tube Range (inch / mm)	19.05 & 25.4
Tube Wall Thickness - Mild Steel (inch / mm)	1.2
Round Pipe (NB) x Wall Capacity - Mild Steel (inch)	~
Round Pipe (NB) x Wall Capacity - Aluminium (inch / mm)	~
Round Pipe (NB) x Wall Capacity - Stainless Steel (inch / mm)	~
Round Tube (OD) x Wall Capacity - Mild Steel (inch / mm)	~
Round Tube (OD) x Wall Capacity - Aluminium (inch / mm)	~
Round Tube (OD) x Wall Capacity - Copper, Brass (inch / mm)	~
Round Tube (OD) x Wall Capacity - Stainless Steel (inch / mm)	~
Round Tube (OD) x Wall Capacity - Chromoly (inch / mm)	~
Solid Rod - Mild Steel (inch / mm)	~
Square Tube x Wall Capacity - Mild Steel (inch / mm)	~
Rectangle Tube x Wall Capacity - Mild Steel (inch / mm)	~
Bend Speed - Maximum (Deg / Sec)	~
Bend Direction	~
Centre Line Radius - Maximum (CLR) (inch / mm)	~
Centre Line Radius - Minimum (CLR) (inch / mm)	~
Tube Formers Included (inch / mm)	9.52, 12.7, 14.29 Round 15.87, 19.05, 22.22 Round 19.05 & 25.4 Square
Pipe Formers Included (inch / mm)	~
Spigot Size on Ram (inch / mm)	~
Angle Capacity (deg)	0 - 180°
Hydraulic Pressure - Maximum (psi)	~
Motor Power (kW / hp)	~
Voltage / Amperage (V / amp)	~

HAFCO Manual Tube Bender - Round & Square TBRS-25

Nett Weight (kg)	28
-------------------------	----
