

**TOOLMASTER T4-MT4**



**Reversible Tapping Chuck - Adjustable Clutch**

**Include 3MT & 4MT Arbours**



## TOOLMASTER Reversible Tapping Chuck - Adjustable Clutch T4-MT4



Full Kit



Blow Mold Case

### Features

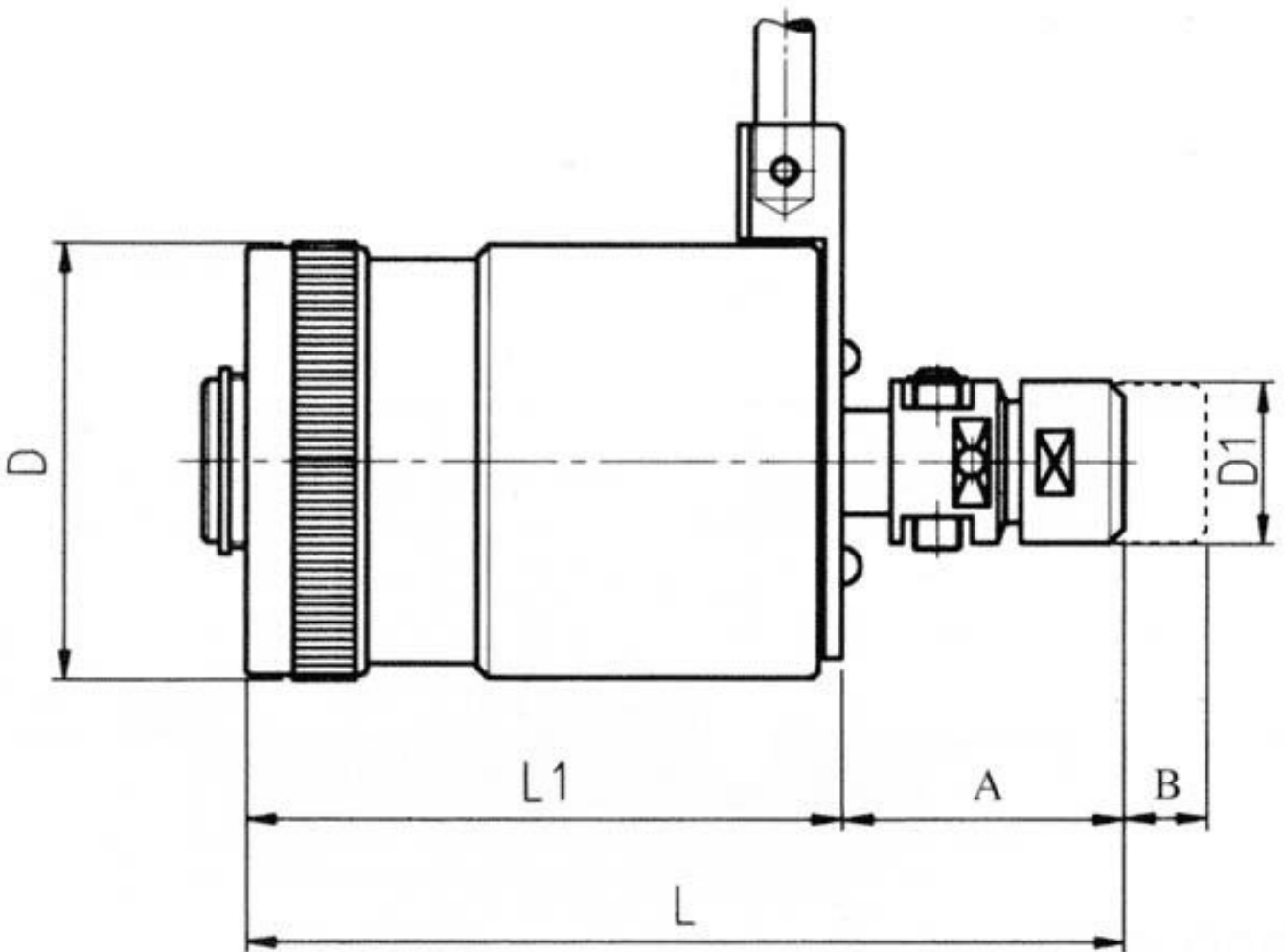
- Pre-select torque drive to prevent tap breakage and allow for blind hole tapping
- Tension and compression feature compensates between rate of feed applied and thread pitch
- Suitable for right and left hand, vertical and horizontal tapping
- Fast tap reversal. Re-entry cushioning eliminates cross threading
  
- Clutch Torque Setting:
  - 1 - 12 Nm
  - 2 - 20 Nm
  - 3 - 60 Nm
  - 4 - 110 Nm
  
- Please Note: M20 tap requires a 14mm Shank

### Includes

- MT3 & MT4 arbors - threaded end
- 2 x Collet chuck spanners
- 2 x Rubber flex collets
- 2 x allen keys

### Specifications

**TOOLMASTER Reversible Tapping Chuck - Adjustable Clutch T4-MT4**



**TOOLMASTER Reversible Tapping Chuck - Adjustable Clutch T4-MT4**

**ORDER CODE**

**TOOLMASTER Reversible Tapping Chuck - Adjustable Clutch T4-MT4**

T005

<b>MODEL</b>	T4-MT4
<b>Arbor Mount</b>	Threaded
<b>Taper (MT)</b>	3 & 4
<b>Tapping Range (mm)</b>	8 - 20
<b>Tapping Shank Size (mm)</b>	6.3 - 14
<b>D (mm)</b>	90
<b>D1 (mm)</b>	38
<b>L (mm)</b>	195
<b>L1 (mm)</b>	134
<b>A (mm)</b>	62
<b>B (mm)</b>	20
<b>Nett Weight (kg)</b>	6.8