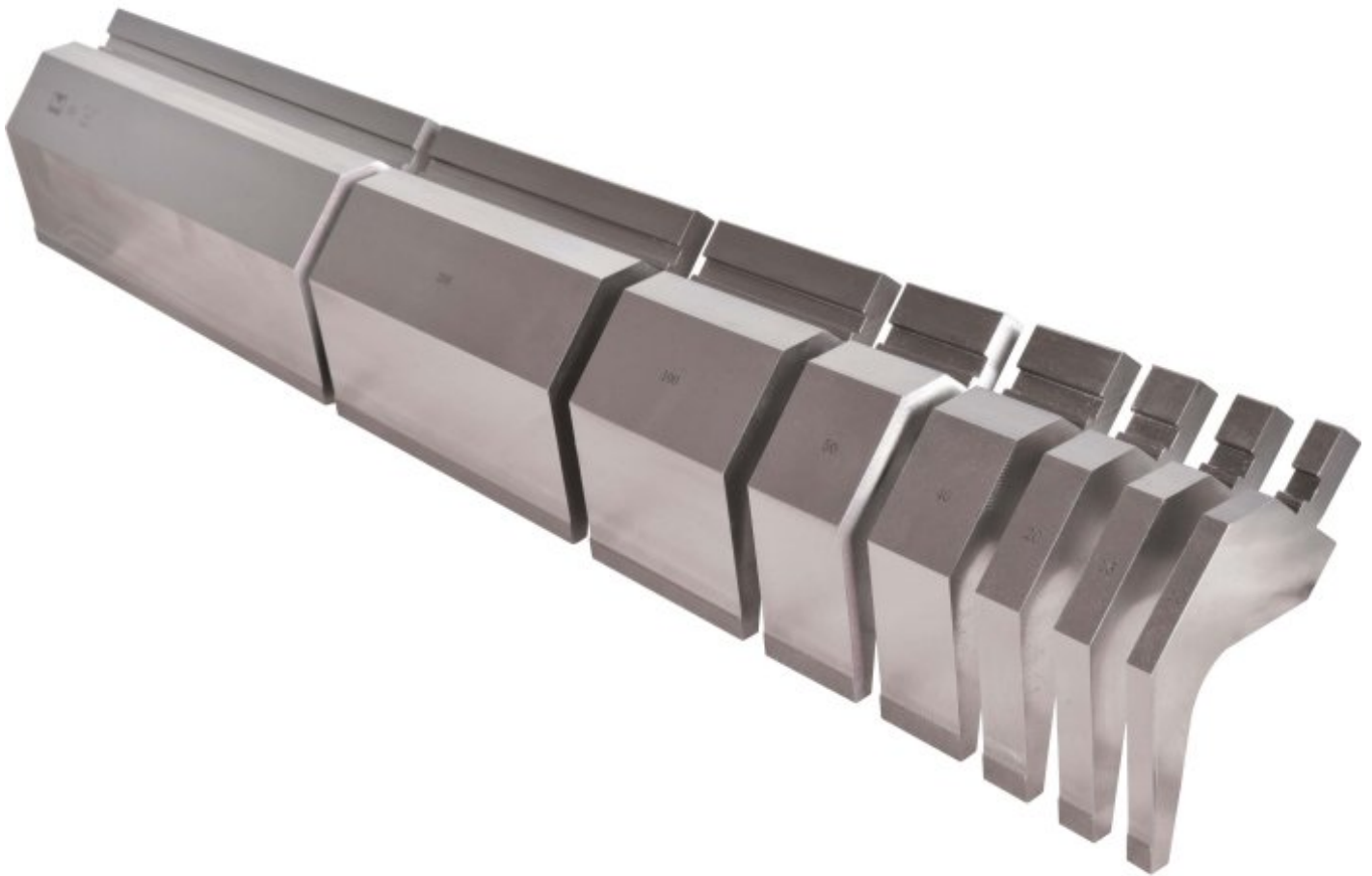


METALMASTER TP86-150.800GS



86° Top Punch Gooseneck Pressbrake Tooling - Segmented

150mm High x 800mm Long, Divided in Segments - 10, 15, 20, 40, 50, 100, 200, 365mm



METALMASTER 86° Top Punch Gooseneck Pressbrake Tooling - Segmented TP86-150.800GS



Full View



Measuerments

Description

Precision Pressbrake Gooseneck Punch made from chromium-molybdenum high strength steel and heat treated for long term durability.

Nose Angle - 86 Degrees

Nose Radius - 0.5mm

Total Height - 150mm

Shoulder height - 120mm

Max. Tonnage - 500kN/m

Length - 800mm divided into the following segments: 10, 15, 20, 40, 50,100, 200, 365mm

Suits MetalMaster, Amada & European Pressbrakes

Specifications

Order Code	S9920S
Model	TP86-150.800G
Type	86° Top Punch Gooseneck - Segmented
Size (mm)	150 x 800