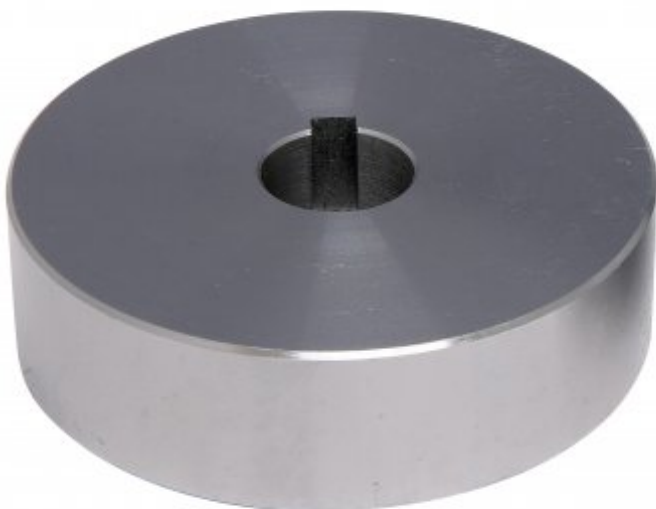


**METALMASTER MBR-2BK**



**Blank Bead Roller Sets**

**1 x (Ø85 x 46mm Set) & 1 x (Ø85 x 25mm Set)**



**METALMASTER Blank Bead Roller Sets MBR-2BK**



Narrow Blank Roller Set



Narrow Blank Roller Set Rear View



Narrow Blank Roller Front View



Narrow Blank Rollers Rear View



Narrow Blank Rollers Side Profile View



Wide Blank Roller Set



Wide Blank Roller Set Rear View



Wide Blank Rollers Front View



Wide Blank Rollers Rear View



Wide Blank Roller Side Profile View



Shown on Machine



Shown on Machine Side View

**Description**

Blank roller set made from #45 steel, and can be machined in a metal turning lathe with the aid of the optional mandrel holder MBR-MDL - (S6336)

## METALMASTER Blank Bead Roller Sets MBR-2BK

### Features

- Can be machined up to your specific shape/design as required
- Can also be flame hardened up to 40HRC after machining

### Includes

- 1 x Ø85 x 46mm blank bead roller set
- 1 x Ø85 x 25mm blank bead roller set

### Specifications

<b>ORDER CODE</b>	S6335
<b>MODEL</b>	MBR-2BK
<b>Part Number</b>	~
<b>Type</b>	2 x Blank Bead Roller Sets
<b>Size (inch / mm)</b>	85 x 46 & 85 x 25
<b>Roller Diameter (mm)</b>	Ø85
<b>Bore Diameter (mm)</b>	Ø20 with Keyway
<b>Spigot Diameter (mm)</b>	~
<b>Shaft Diameter</b>	~
<b>Capacity (Mild Steel) (mm / Gauge)</b>	1.2 / 18
<b>Material (Type)</b>	Steel
<b>Suits</b>	MBR-610 & MBR-1070 Bead Rollers