

**HAFCO RSS-4WS**



**Industrial Steel Shelving**

**364kg Shelf Load Capacity**



## HAFCO Industrial Steel Shelving RSS-4WS



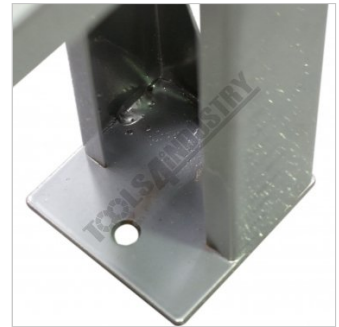
External Shelf Locking System



Internal Shelf Locking Wedge Type System



Shelf Wire Mesh



Foot Post with Bolt Down Provisions

### Description

Industrial steel shelving which is supplied in bays 1955mm (L) x 610mm (W) x 1830mm (H) with a silver corrosive resistant powder coated finish.

Each bay consists of four levels with wire mesh inserts, each shelf has a capacity of 364kg. The vertical posts have provision to adapt an optional racking extensions (S014A) to double the storage. The shelf rails are secured in position and locked in via a wedge system. Simply very easy to assemble without the use of any tools.

### Features

- 364kg capacity per shelf
- Industrial 4 shelves with reinforced steel wire grid pattern mesh
- Adjustable shelf height position with interlocking tabs
- Silver corrosive resistant powder coated finish
- Vertical posts have double sided punched holes to connect optional extension bay
- Vertical posts are 64 x 38 x 1.6mm heavy duty C-section
- Cross member supports for wire mesh are 70 x 18 x 1.6mm heavy duty C-section
- Strengthening side supports are 40 x 18 x 1.4mm C-section
- 1955 x 610 x 1830mm (LxWxH) assembled dimensions

### Specifications

<b>ORDER CODE</b>	S014
<b>MODEL</b>	RSS-4WS
<b>Type</b>	Industrial Steel Shelving
<b>Drawer Load Capacity (kg)</b>	~
<b>Shelf Load Capacity (kg)</b>	364
<b>Total Combined Load Capacity (kg)</b>	~
<b>Parts Bin Load Capacity Each (kg)</b>	~
<b>Buckets / Bins Total Quantity (No.)</b>	~
<b>Buckets / Bins Dividers Quantity (No.)</b>	~
<b>Maximum Total Load Capacity (kg)</b>	~
<b>Buckets / Bins A: Quantity / Size (mm)</b>	~
<b>Buckets / Bins B: Quantity / Size (mm)</b>	~
<b>Buckets / Bins C: Quantity / Size (mm)</b>	~
<b>Buckets / Bins D: Quantity / Size (mm)</b>	~
<b>Dimensions (W x D x H) (mm)</b>	1955 x 610 x 1830

**HAFCO Industrial Steel Shelving RSS-4WS**

---

<b>Nett Weight (kg)</b>	55
-------------------------	----

---