

METALMASTER HPR-100T



Industrial Motorised Hydraulic Roll Frame Press with Movable Cylinder - 100 Tonne

Heavy Duty 1680 x 1040mm Stationary Bed



METALMASTER Industrial Motorised Hydraulic Roll Frame Press with Movable Cylinder - 100 Tonne HPR-100T



Front View



Adjustable Ram Head Height



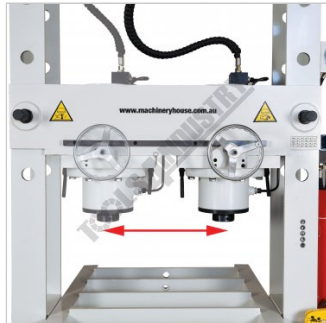
Rear Right View



Rear Left View



Side View



Sliding Ram Head



Cylinder Ram Head



Horizontal Press Positioning



Ram Head



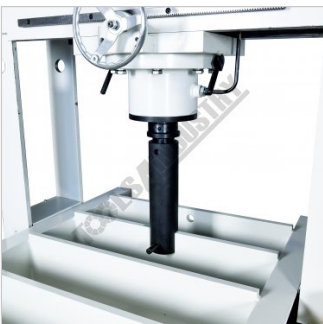
Hydraulic Press Position Lock



Head Height Positioning Pins



Bed Strengthening Rib Plates



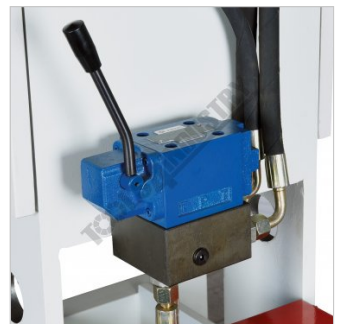
Ram Head Height Setting Adaptor



Adaptors For Rasing-Lowering Ram



Pressure Gauge

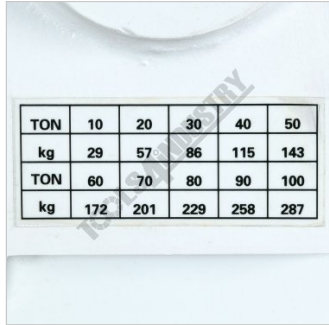


Hydraulic Pressure Lever Control

METALMASTER Industrial Motorised Hydraulic Roll Frame Press with Movable Cylinder - 100 Tonne HPR-100T



Power Control Panel



TON	10	20	30	40	50
kg	29	57	86	115	143
TON	60	70	80	90	100
kg	172	201	229	258	287

Tonnage Chart

Description

The HP-100T unique roll frame press with moveable head is designed to support heavy loads with its stationary bed. The press frame can slide back & forth & be positioned along the 1680mm table bed, whilst the ram can also slide left to right into the desired position required for those awkward offset jobs, making this press very handy to have in any heavy vehicle repair workshop or manufacturer.

Features

- Easy to use and powerful press for most applications & ideal for the repair of axles, shafts, & press fit of bearings & bushings
- Press frame can be repositioned by easily sliding back & forth along table bed and travel a total of 1020mm
- Press frame is locked with an independent hydraulic hand pump system
- Ram can be repositioned via crank hand wheel, slides left or right 550mm
- Ram speed down 7.9mm/sec, returns 9.0mm/sec
- Heavy duty stationary bed 1680 x 1040mm
- Heavy duty welded steel fabricated frame
- Strong hydraulic cylinder ensures precise pressing during operation
- Fitted with pressure gauge
- Safety overload valve
- Hydraulic joystick control lever
- Powerful TEFC motor
- Heavy duty one piece table bed
- Press head can be adjusted for height using with adaptor and hydraulic ram

- Pre-Commissioning:
 1. Press is run & tested prior delivery
 2. Hydraulic oil is included with machine

METALMASTER Industrial Motorised Hydraulic Roll Frame Press with Movable Cylinder - 100 Tonne HPR-100T**Specifications**

ORDER CODE	P402T
MODEL	HPR-100T
Pressing Capacity (Tonne)	100
Hydraulic Ram Operation (Type)	Motorised System
Sliding Ram (left-right) (Yes / No)	Yes
Width Between Front Posts (mm)	1060
Width Between Side Posts (mm)	310
Table Top Opening - (Front to Back) (mm)	~
Ram To Table (Max.) (mm)	890
Cylinder Stroke (mm)	350
Ram Diameter (mm)	Ø100
Piston Diameter (mm)	~
Minimum Air Flow Rate required (L/Min)	~
Motor Power (kW / hp)	7.5 / 10
Voltage (V)	415
Floor Space (W x D x H) (mm)	1780 x 1865 x 2655
Nett Weight (kg)	1960