

METALMASTER HP-100T



Industrial Motorised Hydraulic Press - 100 Tonne

Welded Steel Frame Construction



METALMASTER Industrial Motorised Hydraulic Press - 100 Tonne HP-100T



Left View



Front View



Controls



Control Panel



Hydraulic Ram



Table Height Adjustment With Chain



Table Height Adjustment Chain Slot

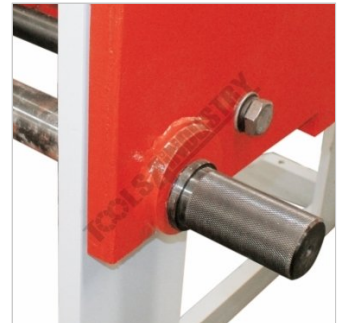
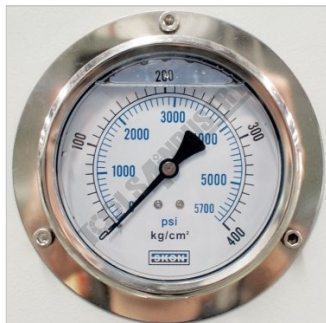


Table Pin



Pin Safety Clip



Pressure Gauge



Isolation Switch

TON	10	20	30	40	50
kg	32	70	100	130	160
TON	60	70	80	90	100
kg	190	220	225	290	315

Chart

Description

The Metalmaster HP-100T, 100 Tonne electric/hydraulic press is ideal for pressing, bending, forming, straightening and a whole variety of operations. The hydraulic system is equipped with a pressure gauge and a joystick lever to control the operation. A heavy one piece steel workplate and a pair of pressing blocks are supplied as standard equipment.

METALMASTER Industrial Motorised Hydraulic Press - 100 Tonne HP-100T

Features

- H frame design with welded steel frame construction
- Electric/Hydraulic operation provides smooth, consistent pressing action
- Joystick control for ram stroke and return
- 350mm Ram stroke
- Ram speed down 9.0mm/sec, returns 8.4mm/sec
- Pressure gauge fitted for easy control of pressing operations
- Height adjustable worktable with 4 adjustment positions
- Heavy one piece steel work plate and pressing blocks
- Work table height easily adjusted with the assistance of the ram
- Reinforced table support holes with high tensile setting pins
- Safety overload valve
- Powerful TEFC motor
- Ideal for any industrial workshop for the repair of axles, shafts, & press fit of bearings & bushings

Includes

- Heavy one piece steel work plate
- Pair of double sided pressing blocks (Vee & Flat)
- Table raising and lowering chains

Specifications

ORDER CODE	P402
MODEL	HP-100T
Pressing Capacity (Tonne)	100
Hydraulic Ram Operation (Type)	Motorised System
Sliding Ram (left-right) (Yes / No)	No
Width Between Front Posts (mm)	1050
Width Between Side Posts (mm)	310
Table Top Opening - (Front to Back) (mm)	363
Ram To Table (Max.) (mm)	900
Cylinder Stroke (mm)	350
Ram Diameter (mm)	Ø100
Piston Diameter (mm)	~
Minimum Air Flow Rate required (L/Min)	~
Motor Power (kW / hp)	7.5 / 10
Voltage (V)	415
Floor Space (W x D x H) (mm)	1920 x 1000 x 2220
Nett Weight (kg)	1342