

## METALMASTER HPM-63T



Industrial Motorised Hydraulic Press with Movable Cylinder - 63 Tonne

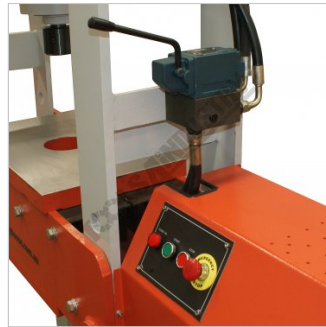
Welded Steel Frame Construction



## METALMASTER Industrial Motorised Hydraulic Press with Movable Cylinder - 63 Tonne HPM-63T



Sliding Ram Head Adjustment Handle



Controls



Control Panel



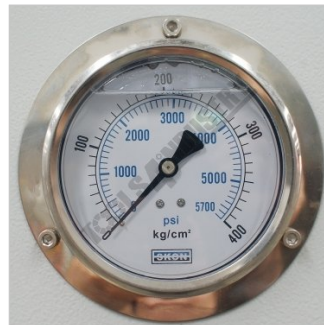
Table Pin



Pin Safety Clip



Table Chain Lifting Point



Pressure Gauge



Isolation Switch

### Description

The Metalmaster HPM-63T, 63 Tonne electric/hydraulic press features a sliding cylinder which can be moved from side to side allowing for those offset pressing jobs. A heavy one piece steel workplate and a pair of pressing blocks are supplied as standard making this the ideal press for pressing, bending, forming, straightening and a whole variety of operations.

### Features

- H frame design with welded steel frame construction
- Movable cylinder (left-right) allows operator to reposition the cylinder for off centre work
- Electric/Hydraulic operation provides smooth, consistent pressing action
- Joystick control for ram stroke and return
- 300mm Ram stroke
- Ram speed down 6.7mm/sec, returns 5.9mm/sec
- Pressure gauge fitted for easy control of pressing operations
- Height adjustable worktable with 5 adjustment positions
- Heavy one piece steel work plate and pressing blocks
- Work table height easily adjusted with the assistance of the ram
- Reinforced table support holes with high tensile setting pins
- Safety overload valve
- Powerful TEFC motor
- Ideal for any industrial workshop for the repair of axles, shafts, & press fit of bearings & bushings

**METALMASTER Industrial Motorised Hydraulic Press with Movable Cylinder - 63 Tonne HPM-63T**

**Includes**

- Heavy one piece steel work plate
- Pair of double sided pressing blocks (Vee & Flat)
- Table raising and lowering chains

**Specifications**

<b>ORDER CODE</b>	P400M
<b>MODEL</b>	HPM-63T
<b>Pressing Capacity (Tonne)</b>	63
<b>Hydraulic Ram Operation (Type)</b>	Motorised System
<b>Sliding Ram (left-right) (Yes / No)</b>	Yes
<b>Width Between Front Posts (mm)</b>	895
<b>Width Between Side Posts (mm)</b>	275
<b>Table Top Opening - (Front to Back) (mm)</b>	325
<b>Ram To Table (Max.) (mm)</b>	900
<b>Cylinder Stroke (mm)</b>	300
<b>Ram Diameter (mm)</b>	Ø80
<b>Piston Diameter (mm)</b>	~
<b>Minimum Air Flow Rate required (L/Min)</b>	~
<b>Motor Power (kW / hp)</b>	4 / 5.3
<b>Voltage (V)</b>	415
<b>Floor Space (W x D x H) (mm)</b>	1700 x 1000 x 2080
<b>Nett Weight (kg)</b>	912