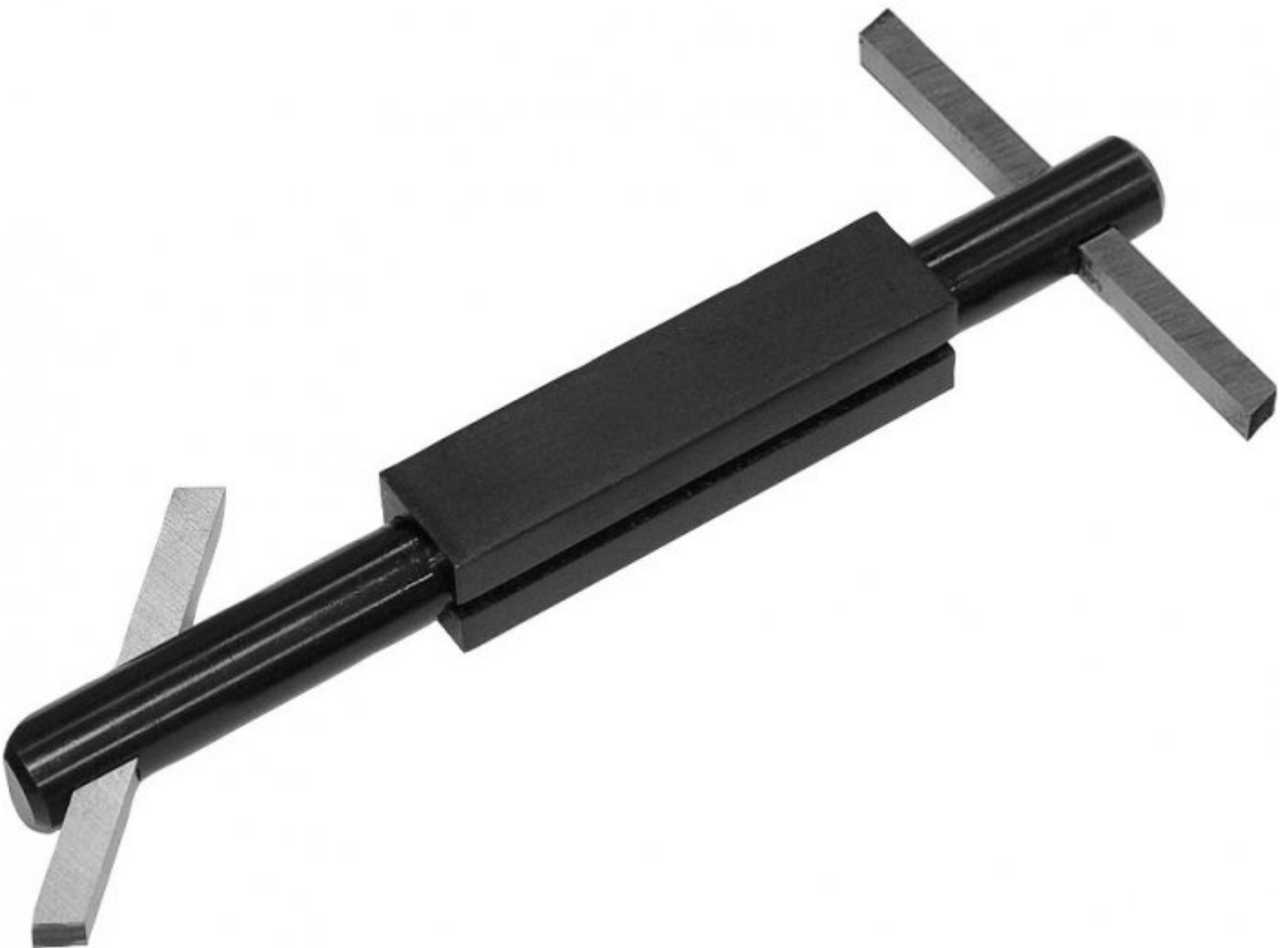


TOOLMASTER

Boring Bar with Holder

3/16"



TOOLMASTER Boring Bar with Holder

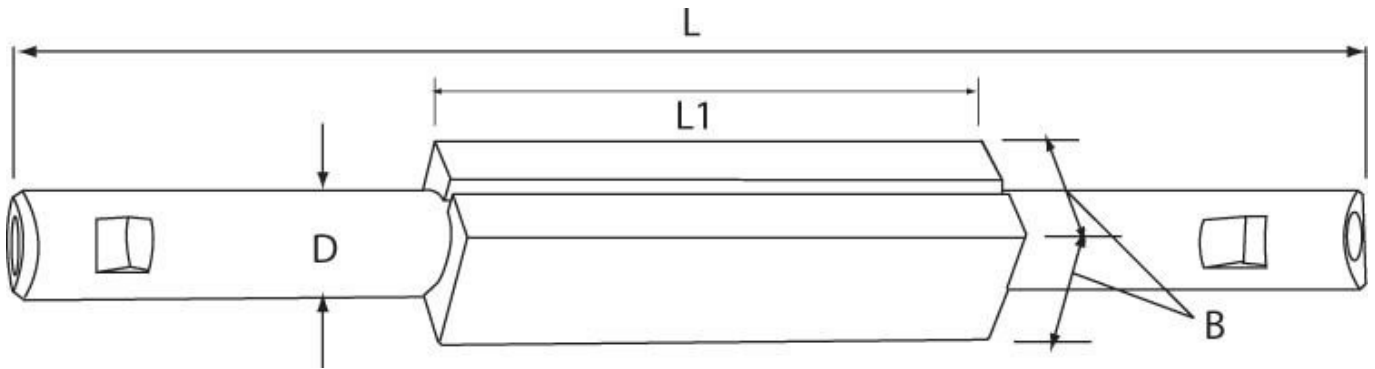
Description

NOTE: HSS Tool bits not supplied
 Use 3/16" HSS Tool Bit (L0002)

Features

- Double-ended bars with 45° and 90° angular square holes at either end
- Accurately broached square holes to accept standard high speed steel or carbide tool bits
- Supplied fitted with screws and allen key

Specifications



ORDER CODE	L101
B	5/8"
D	7/16"
L	5-1/4"
L1	2-1/2"
Toolbit Required	3/16" (L0002)
Nett Weight (kg)	0.28