

KYOCERA WNMG 080408PMG

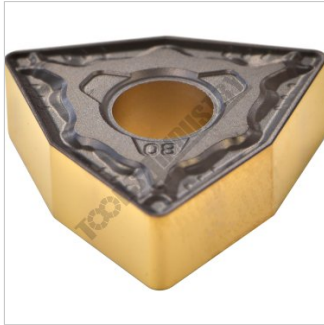
KYOCERA
JAPANESE CARBIDE

KYOCERA Carbide Inserts - Turning

Grade CA125P - General Purpose Steel



KYOCERA KYOCERA Carbide Inserts - Turning WNMG 080408PMG



Tip

Description

CA125P Grade CVD Coated Carbide for Steel
 Suitable for continuous to heavy interrupted machining, these inserts are designed for general-purpose applications.

PMG Chipbreaker
 Covers a wide range of machining applications from medium machining to roughing.
 Excellent wear resistance with low cutting force design. Reduces chip shape inconsistencies and improves tool life.

Features

- Japanese Made
- CVD Coated Carbide with Thin Ultra-fine TiCN Coating
- 10 Inserts Per Pack

Specifications

ORDER CODE	L053
MODEL	WNMG 080408PS
Grade	CA125P
Application	General Purpose Steel
Pieces in Set (No.)	10
I.C. (mm)	8.7
Thickness (S) (mm)	4.76
Hole Diameter Ø (D1) (mm)	5.16
Corner Radius (RE) (mm)	0.8
Relief Angle (Deg)	~
d (mm)	12.7
Insert shape	~
Use Classification	~
Clearance Angle	~