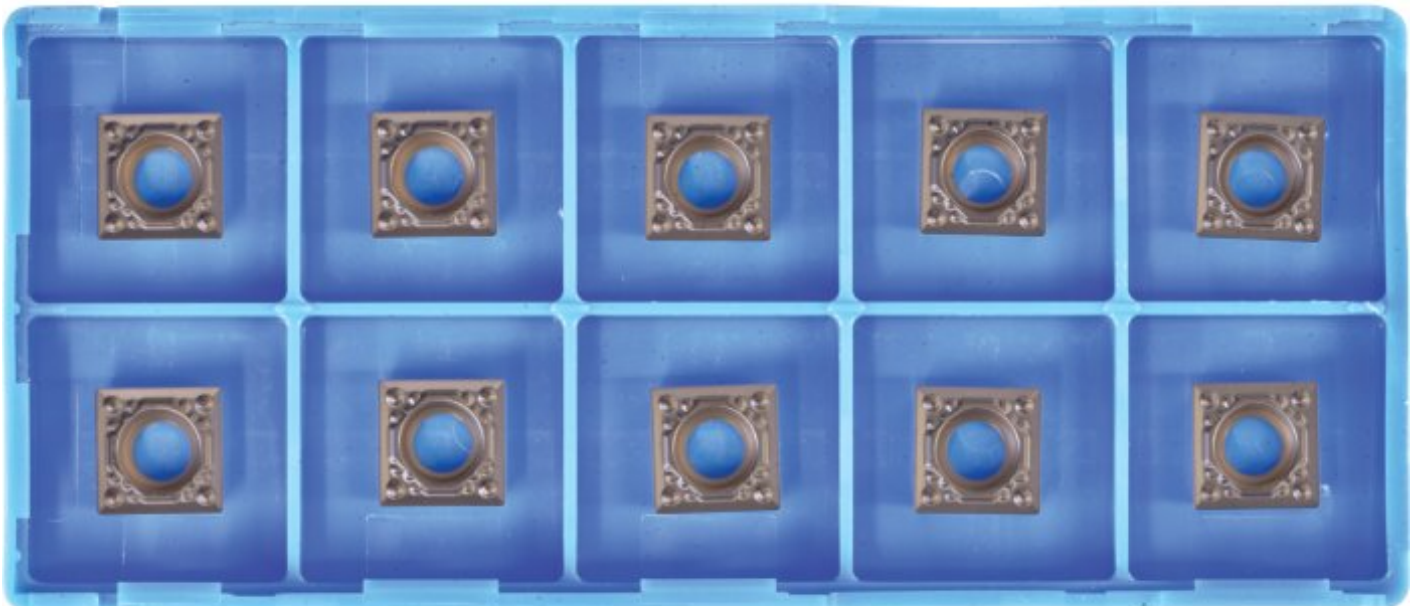


KYOCERA SCMT09T304HQ

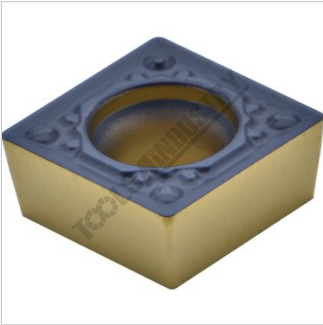
KYOCERA Carbide Inserts - Turning

Grade CA125P - Finishing to Medium

KYOCERA
JAPANESE CARBIDE



KYOCERA KYOCERA Carbide Inserts - Turning SCMT09T304HQ



Tip



Tip Top View

Description

CA125P Grade CVD Coated Carbide for Steel
Suitable for continuous to heavy interrupted machining, these inserts are designed for general-purpose applications.

HQ Chipbreaker
General purpose chipbreaker for medium machining.

Features

- Japanese Made
- CVD Coated Carbide with Thin Ultra-fine TiCN Coating
- 10 Inserts Per Pack

Specifications

ORDER CODE	L0515
MODEL	SCMT09T304HQ
Grade	CA125P
Application	Finishing to Medium
Pieces in Set (No.)	10
I.C. (mm)	9.525
Thickness (S) (mm)	3.97
Hole Diameter Ø (D1) (mm)	4.4
Corner Radius (RE) (mm)	0.4
Relief Angle (Deg)	7°
d (mm)	~
Insert shape	~

KYOCERA KYOCERA Carbide Inserts - Turning SCMT09T304HQ

Use Classification	~
Clearance Angle	~