

HAFCO SSB-CNR



Stainless Steel Corner Work Bench

827 x 827 x 900mm (+ Splashback)



HAFCO Stainless Steel Corner Work Bench SSB-CNR



Front View



Left View



Right View



Corner Rear View



Top Bench Surface Area



Bottom Shelf



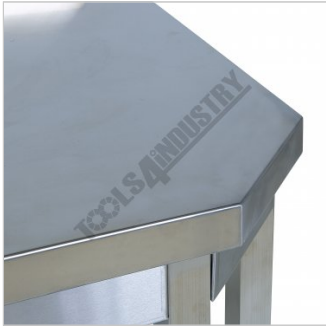
100mm Rear Splash Back



Under Table View



Heavy Duty Braced Legs



Rolled Edges



Adjustable Feet



Shown with Optional SSB-18WS Work Benches

Description

This SSB-CNR stainless steel corner bench with 100mm high splash back allows you to neatly adjoin it to the SSB-18WS work bench to give you more usable work area. The benchtop is manufactured from 1.1mm food grade 304 stainless steel and is supported with a solid 15mm MDF board with stainless cross member supports making it ridged and helping improve the overall sturdiness.

HAFCO Stainless Steel Corner Work Bench SSB-CNR

Features

- 1.1mm thick, 304 grade stainless steel bench top
- Sturdy bench top reinforced with 15mm MDF board & stainless steel cross members
- Bottom shelf has stainless steel cross member supports for addition strength
- 38mm square stainless steel square tube legs with adjustable feet
- 100mm high return splash back
- 250kg table top capacity
- 100kg bottom shelf capacity
- Overall Size - 827 x 827 x 900mm (LxWxH) + 100mm Splashback

Specifications

ORDER CODE	F305
MODEL	SSB-CNR
Bench Material (Type)	Stainless Steel
Table Top Load Capacity (kg)	250
Number of Drawers (No.)	~
Table Dimensions (L x W x H) (mm)	827 x 827 x 900
Nett Weight (kg)	51