

**TOOLMASTER CHR 40-3MT**

**Boring Sleeve - Straight**

**Suits CNC Lathes**



**TOOLMASTER Boring Sleeve - Straight CHR 40-3MT**

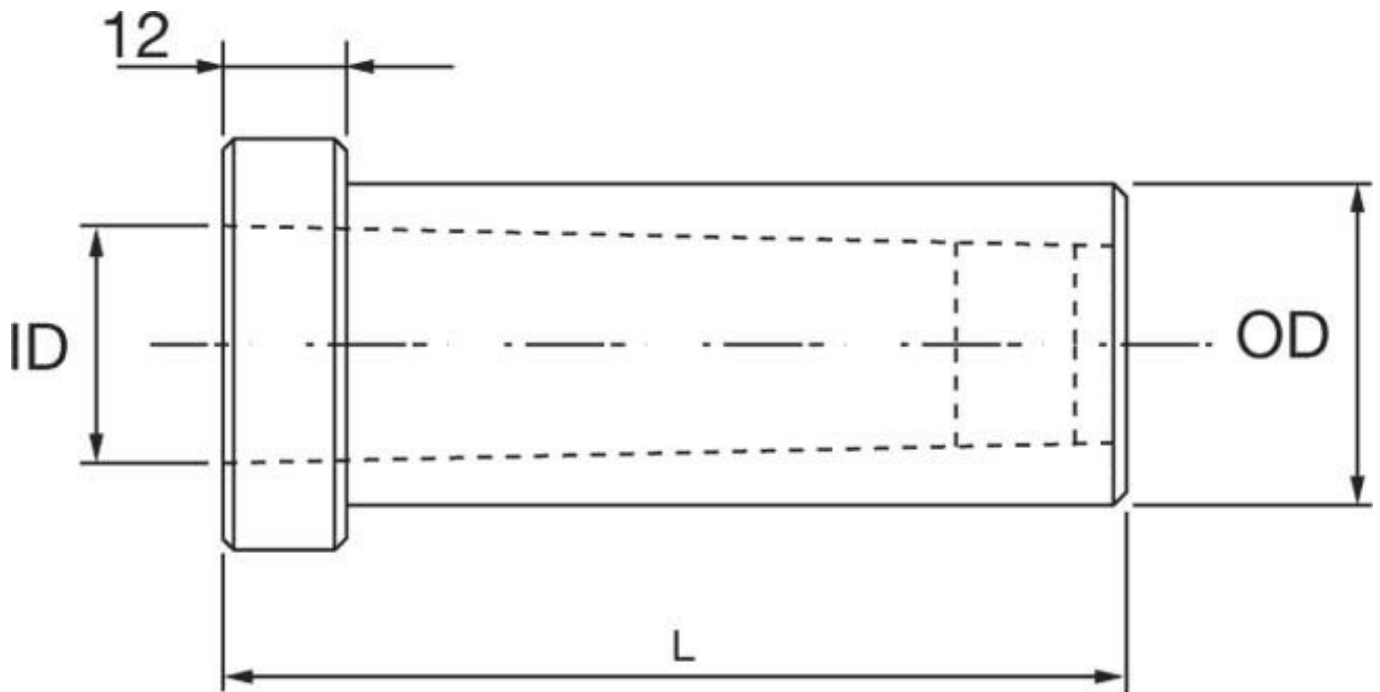
**Description**

Used in the turrets of CNC lathes to hold morse taper drills.  
 Universal design allows these sleeves to be fitted to all CNC machines with turrets

**Features**

- Precision ground inside and out
- Clamping Flat for clamping the sleeve into the turret
- Drive slot for the tang of the taper shank drill

**Specifications**



<b>ORDER CODE</b>	D8293
<b>MODEL</b>	CHR 40-3MT
<b>Type</b>	Plain
<b>OD (mm)</b>	40
<b>ID (mm)</b>	3MT
<b>L (mm)</b>	88
<b>L1 (mm)</b>	~