



TOOLMASTER CHR 20-40

Boring Sleeve - Straight

Suits CNC Lathes



TOOLMASTER Boring Sleeve - Straight CHR 20-40

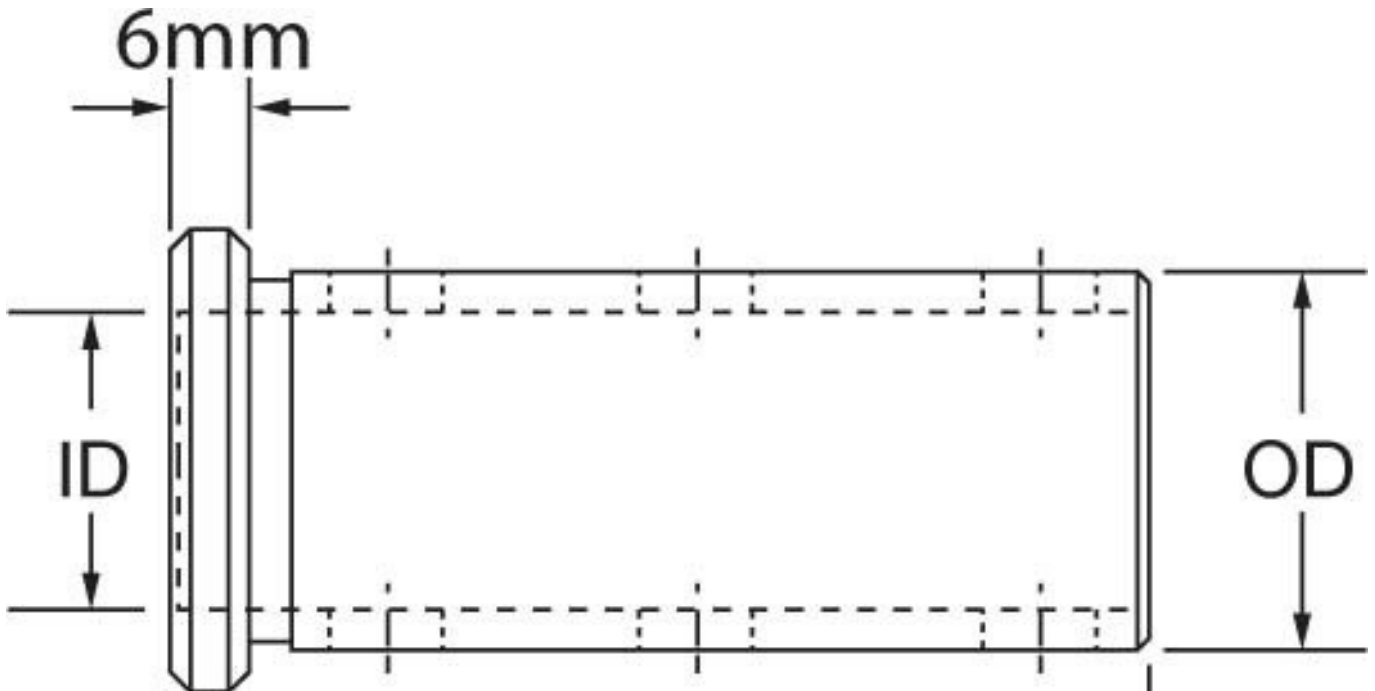
Description

Used in the turrets of CNC lathes to hold boring bars and other cutting tools.
 Universal design allows these sleeves to be fitted to all CNC machines with turrets

Features

- Precision ground
- Clamping Flat for clamping the sleeve into the turret
- Recessed grub screws to clamp the item

Specifications



ORDER CODE	D827
MODEL	CHR 20-40
Type	Set Screws
OD (mm)	40
ID (mm)	20mm
L (mm)	96
L1 (mm)	~