

**TOOLMASTER**



**NT30 x JT6 Drill Chuck Arbor - M12 Threaded Shank**

**Suits Ø13mm Drill Chucks**



**TOOLMASTER NT30 x JT6 Drill Chuck Arbor - M12 Threaded Shank**

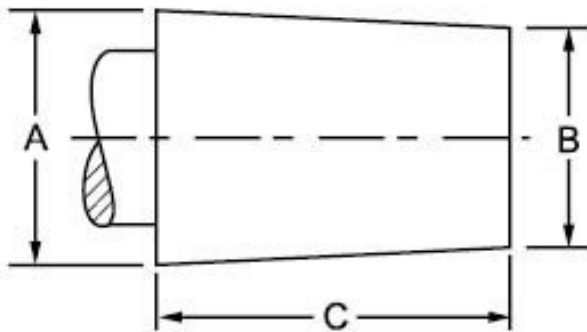
**Description**

Drill chuck arbors have one end which is the taper of the machine. The most common are Morse Tapers for mounting in a drill press spindle or lathe, or NT tapers for mounting in Milling machines. The other end of the arbor is a short taper called a Jacobs Taper that is driven into the taper of the chuck body. The JT taper or Jacobs Taper is the most commonly used taper for mounting a drill chuck. The most common tapers used in Australia are JT2, JT3, JT4 & JT6

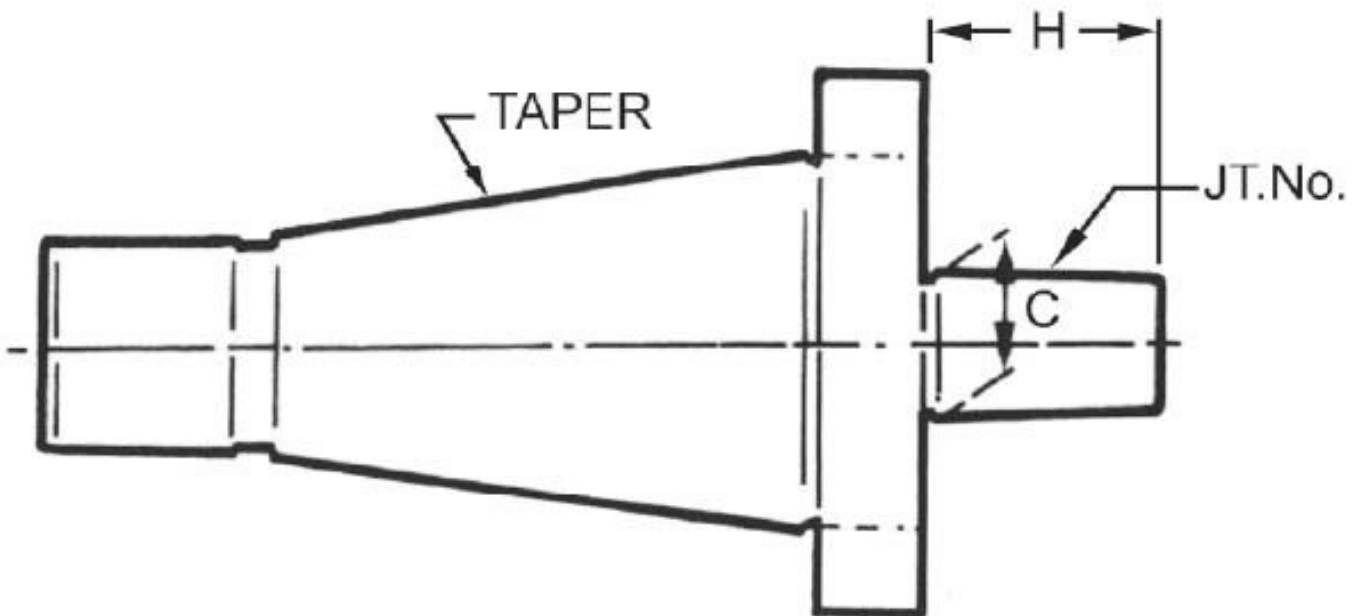
**Features**

- Hardened & precision ground with M12 drawbar thread

**Specifications**



JACOBS TAPER SPECIFICATIONS			
TAPER	A	B	C
JT2	0.559"	0.487"	0.875"
JT3	0.811"	0.746"	1.219"
JT6	0.676"	0.624"	1.000"



<b>ORDER CODE</b>	D450
<b>Long Taper (MT)</b>	NT30
<b>Short Taper (JT)</b>	JT6
<b>Suits Chuck Size (mm)</b>	13
<b>Threaded Shank</b>	M12