

TOOLMASTER



R8 x JT6 Drill Chuck Arbor - 7/16" UNF Threaded Shank

Suits Ø13mm Drill Chucks



TOOLMASTER R8 x JT6 Drill Chuck Arbor - 7/16"UNF Threaded Shank

Drawbar Side

Description

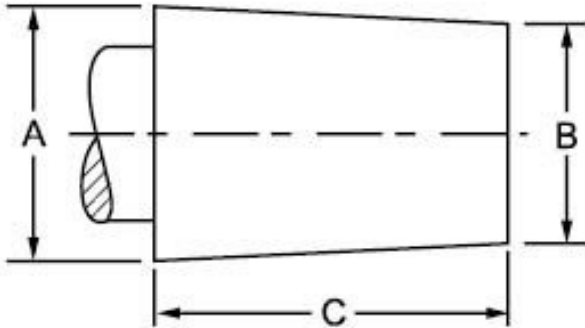
Drill chuck arbors have one end which is the taper of the machine. The most common are Morse Tapers for mounting in a drill press spindle or lathe, or NT tapers for mounting in Milling machines. The other end of the arbor is a short taper called a Jacobs Taper that is driven into the taper of the chuck body. The JT taper or Jacobs Taper is the most commonly used taper for mounting a drill chuck. The most common tapers used in Australia are JT2, JT3, JT4 & JT6

Features

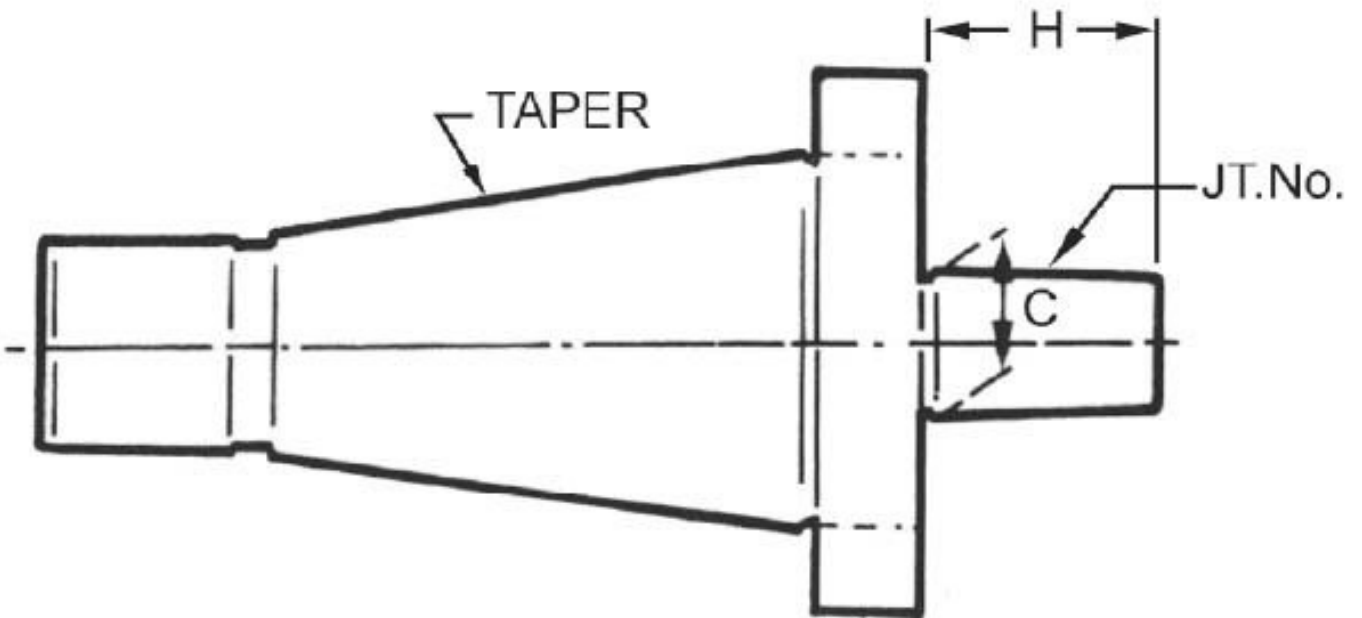
- Hardened & precision ground with 7/16" UNF drawbar thread

Specifications

TOOLMASTER R8 x JT6 Drill Chuck Arbor - 7/16"UNF Threaded Shank



JACOBS TAPER SPECIFICATIONS			
TAPER	A	B	C
JT2	0.559"	0.487"	0.875"
JT3	0.811"	0.746"	1.219"
JT6	0.676"	0.624"	1.000"



TOOLMASTER R8 x JT6 Drill Chuck Arbor - 7/16"UNF Threaded Shank

ORDER CODE

TOOLMASTER R8 x JT6 Drill Chuck Arbor - 7/16"UNF Threaded Shank

D444

Long Taper (MT)	R8
Short Taper (JT)	JT6
Suits Chuck Size (mm)	13
Threaded Shank	7/16" UNF