



**TOOLMASTER**

**32 x 100 x ER32 Collet Chuck - Straight**

**Ø2-Ø20mm Range**



## TOOLMASTER 32 x 100 x ER32 Collet Chuck - Straight

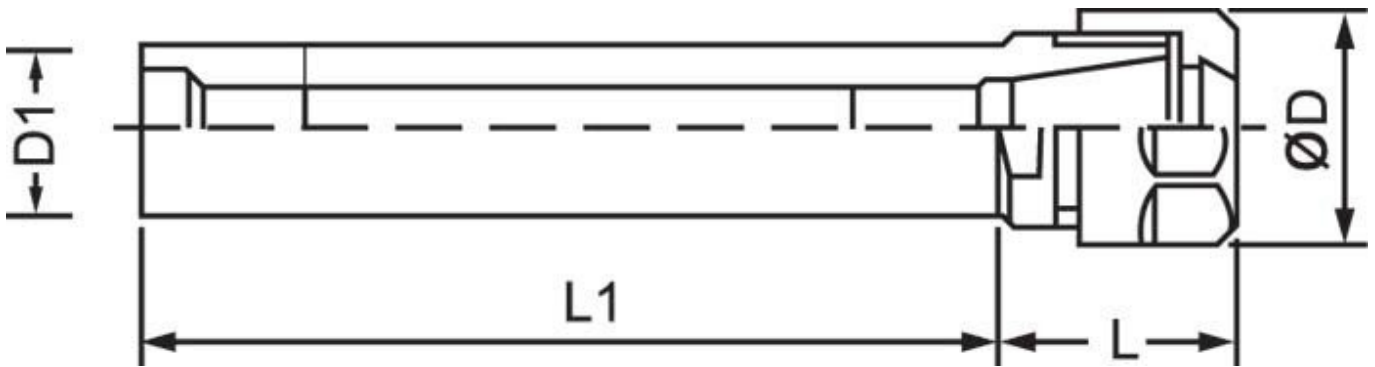
### Description

Toolmaster Straight shanked ER collet chucks are suitable for applications such as turret work or can be used as an extension when a long reach is required  
 Note: Spanner not included

### Features

- Precision ground
- Clamping flat

### Specifications



ORDER CODE	C931
MODEL	32 x 100 x ER32
Shoulder Type (Yes / No)	Yes
D (mm)	50
D1 (mm)	32
L (mm)	54
L1 (mm)	100
Nett Weight (kg)	1.1