



TOOLMASTER

20 x 100 x ER16 Collet Chuck - Straight

Ø1-Ø10mm Range



TOOLMASTER 20 x 100 x ER16 Collet Chuck - Straight

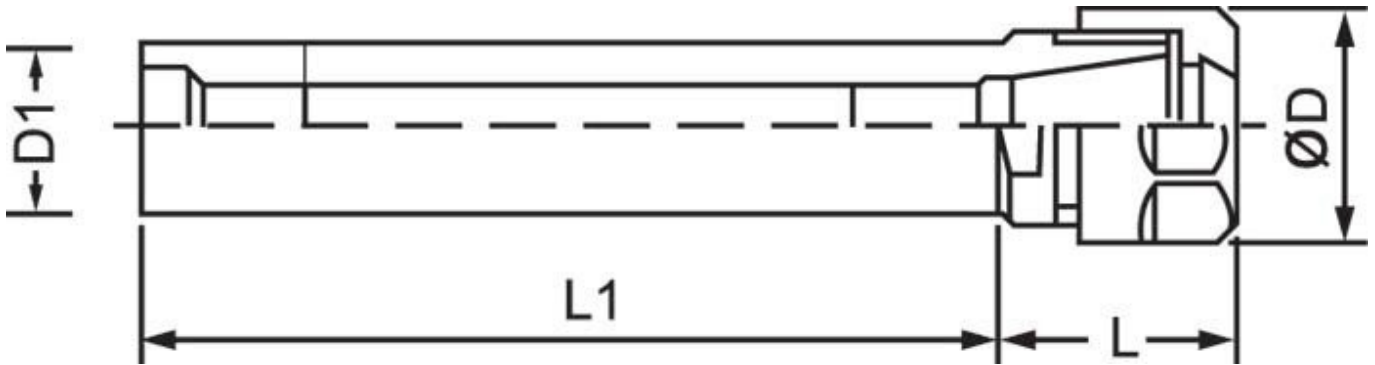
Description

Toolmaster Straight shanked ER collet chucks are suitable for applications such as turret work or can be used as an extension when a long reach is required
 Note: Spanner not included

Features

- Precision ground
- Clamping flat

Specifications



ORDER CODE	C836
MODEL	20 x 100 x ER16
Shoulder Type (Yes / No)	Yes
D (mm)	28
D1 (mm)	20
L (mm)	30
L1 (mm)	100
Nett Weight (kg)	0.3