

TOOLMASTER K11 SERIES

3 Jaw Self Centring Lathe Chuck

Ø130mm



TOOLMASTER 3 Jaw Self Centring Lathe Chuck K11 SERIES

Rear View



Included Accessories



Front View

Description

K11 Series front mount cast iron body lathe chucks are built to GB/T 4346.2-2002 standard, and supplied with one piece standard and reverse jaws.

World-class and industry leader in manufacturing manual lathe chucks for over 30 years. ToolMaster precision tolerance lathe chucks are ISO 9001-2000 approved, and ensure high quality with accuracy testing on every chuck.

Features

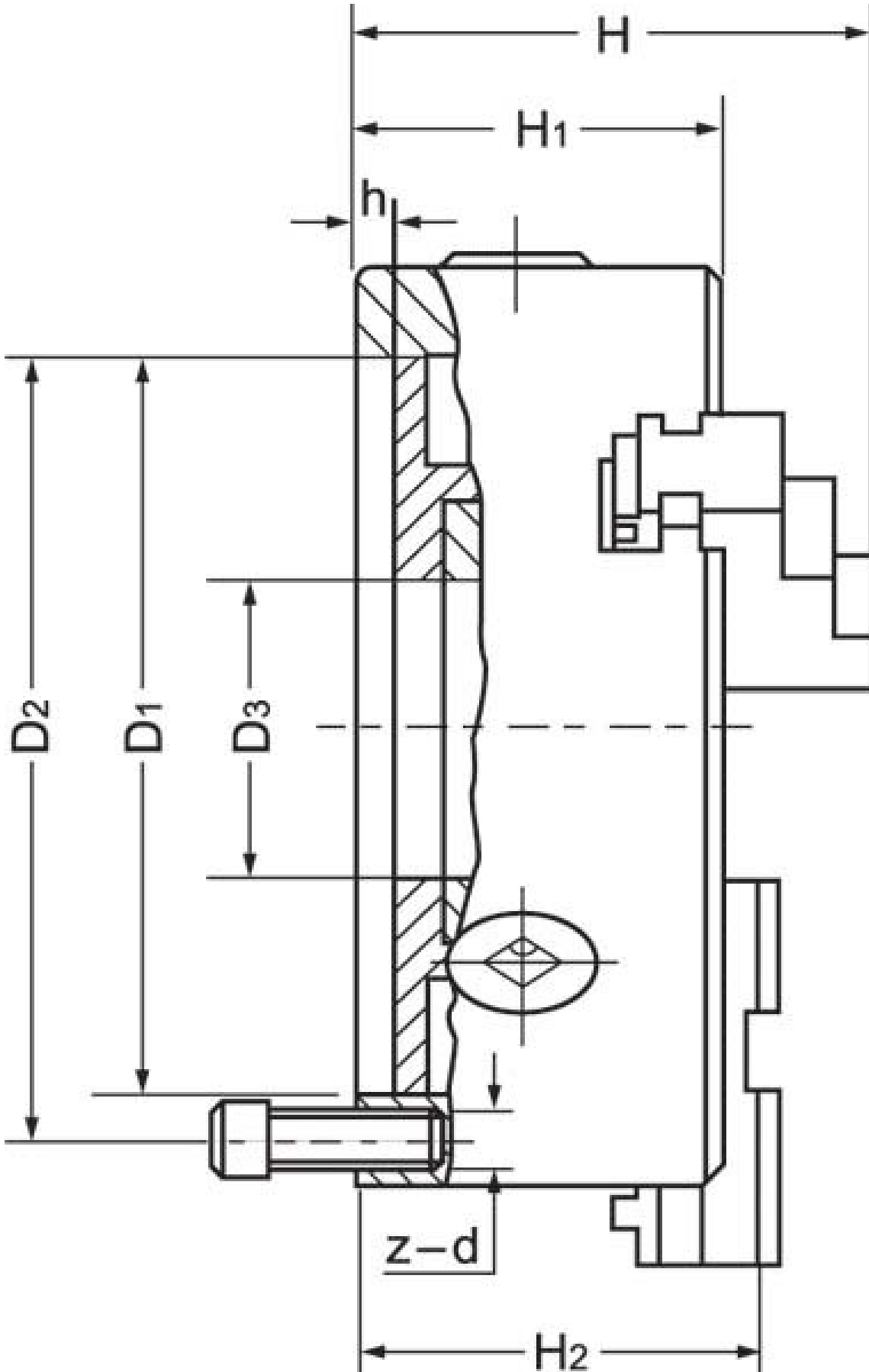
- Ideal for Rotary Tables or Dividing Heads

Includes

- Outside jaws
- Inside jaws
- Mounting screws
- Chuck key

Specifications

TOOLMASTER 3 Jaw Self Centring Lathe Chuck K11 SERIES



TOOLMASTER 3 Jaw Self Centring Lathe Chuck K11 SERIES

ORDER CODE

TOOLMASTER 3 Jaw Self Centring Lathe Chuck K11 SERIES

C280

Mounting Type	Front Mount
Chuck Size (mm)	Ø130
Outside Jaw (mm)	3 - 40
Inside Jaw (mm)	40 - 130
Speed (rpm)	3000
D1 (mm)	100
D2 (mm)	115
D3 (bore) (mm)	30
H (mm)	86
H1 (mm)	60.5
H2 (mm)	~
h (lowercase) (mm)	3.5
z-d (mm)	3 x M8
Nett Weight (kg)	6