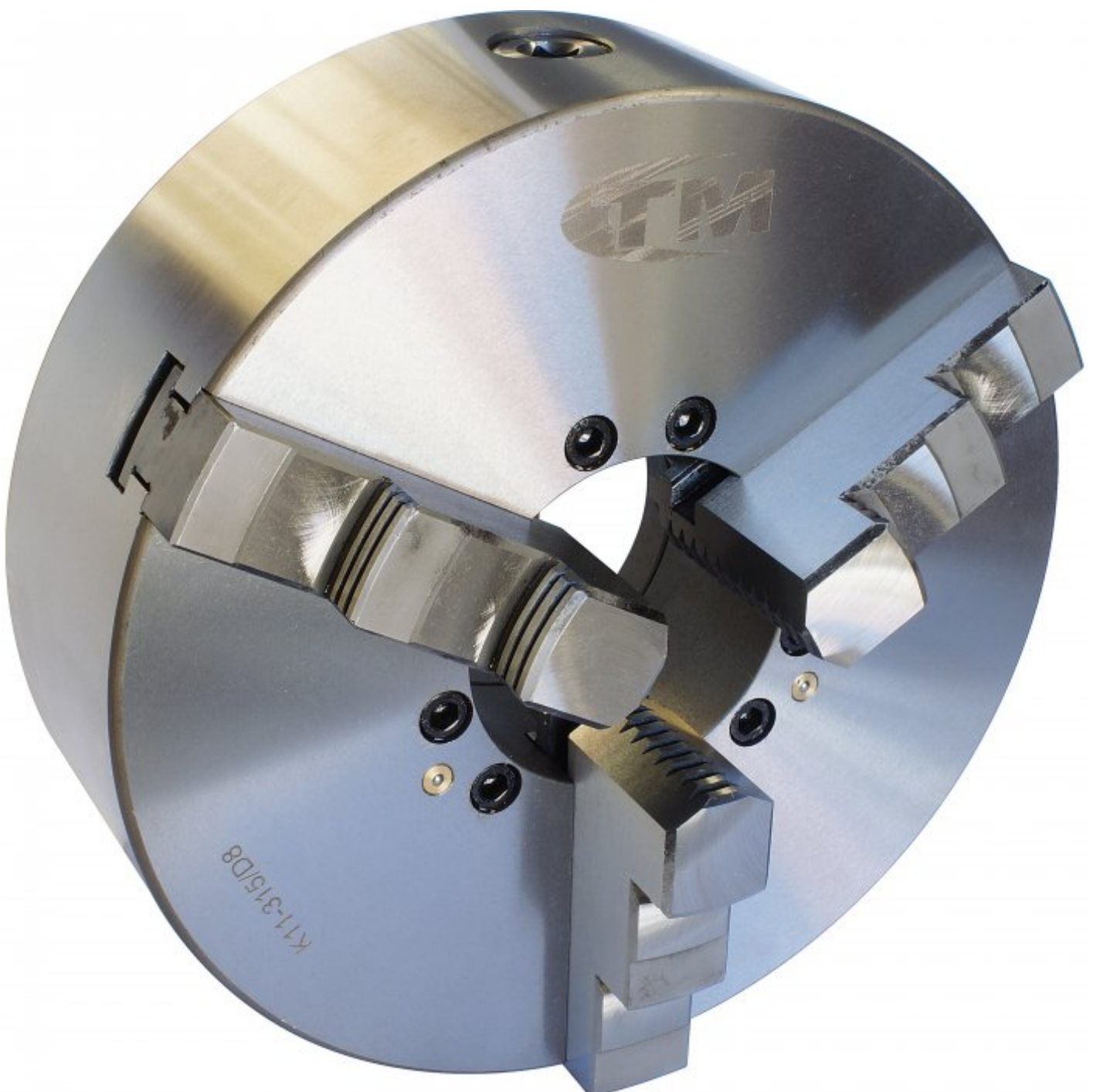


TOOLMASTER K11-320/D18

3 Jaw Self Centring Lathe Chuck

Ø315mm



TOOLMASTER 3 Jaw Self Centring Lathe Chuck K11-320/D18



Camlock Mount



Included Accessories



Front View

Description

K11 SERIES Cast Iron Body
Standard GB/T 4346.2-2002

Features

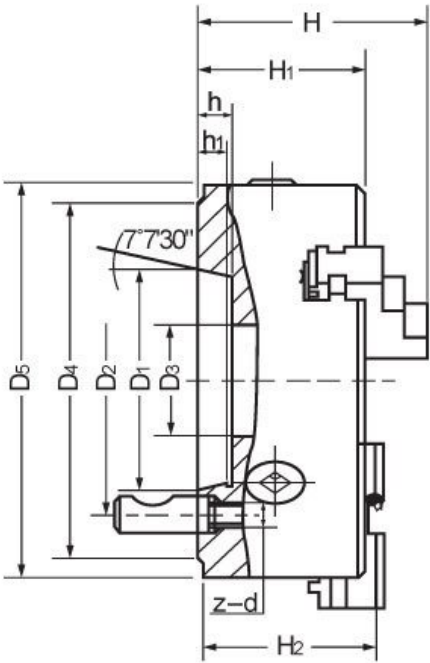
- World-class and industry leader in the manual lathe chuck field with over 30 years of manufacturing
- ToolMaster quality assurance and accuracy testing ensure standards remain high. ToolMaster is ISO 9001-2000 approved
- Each chuck is supplied with a set of inside and outside jaws and a chuck key

Includes

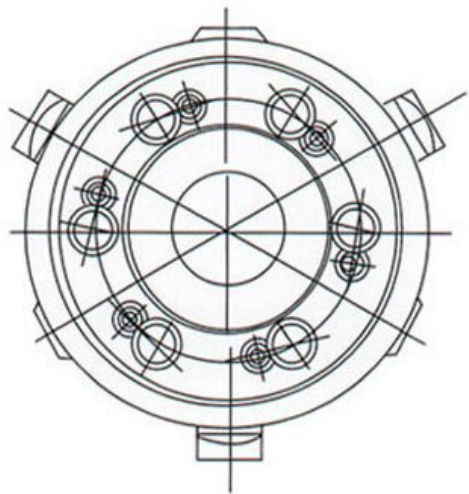
- Outside jaws
- Inside jaws
- Chuck key

Specifications

TOOLMASTER 3 Jaw Self Centring Lathe Chuck K11-320/D18



CAMLOCK



TOOLMASTER 3 Jaw Self Centring Lathe Chuck K11-320/D18

ORDER CODE

TOOLMASTER 3 Jaw Self Centring Lathe Chuck K11-320/D18

C269

Chuck Size (mm)	Ø315
Camlock	D1-8
Outside Jaw (mm)	11.5 - 165
Inside Jaw (mm)	110 - 320
Speed (rpm)	1200
D1 (mm)	260
D2 (mm)	285
D3 (mm)	100
H (mm)	136
H1 (mm)	90
h (mm)	6
Nett Weight (kg)	60