

TOOLMASTER K11-250/D18

3 Jaw Self Centring Lathe Chuck

Ø250mm



TOOLMASTER 3 Jaw Self Centring Lathe Chuck K11-250/D18

Camlock Mount



Included Accessories



Front View

Description

K11 SERIES Cast Iron Body

ISO 9001-2000 standard accuracy

Features

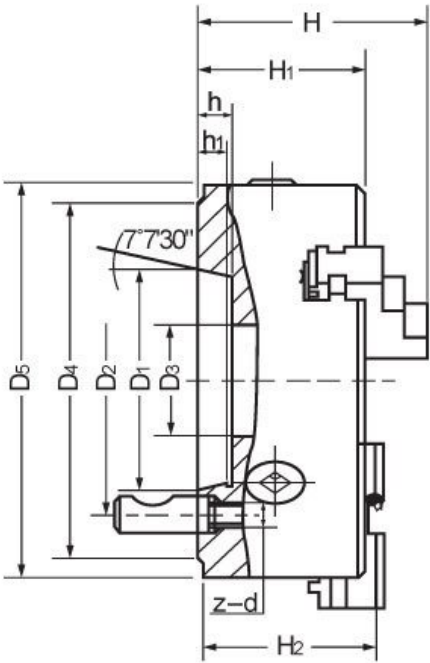
- Manufactured by the world's largest chuck producer, established in 1938
- ToolMaster quality assurance and accuracy testing ensure standards remain high. ToolMaster is ISO 9001-2000 approved
- Each chuck is supplied with a set of inside and outside jaws and a chuck key

Includes

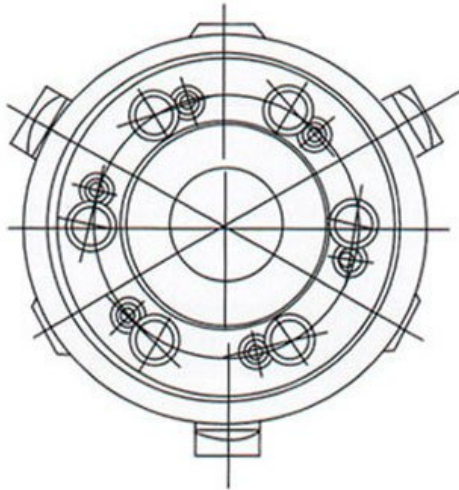
- Outside jaws
- Inside jaws
- Chuck key

Specifications

TOOLMASTER 3 Jaw Self Centring Lathe Chuck K11-250/D18



CAMLOCK



TOOLMASTER 3 Jaw Self Centring Lathe Chuck K11-250/D18

ORDER CODE

TOOLMASTER 3 Jaw Self Centring Lathe Chuck K11-250/D18

C264

Chuck Size (mm)	Ø250
Camlock	D1-8
Outside Jaw (mm)	6 - 110
Inside Jaw (mm)	90 - 250
Speed (rpm)	1600
D1 (mm)	139
D2 (mm)	172
D3 (mm)	80
H (mm)	120
H1 (mm)	80
h (mm)	5
Nett Weight (kg)	33