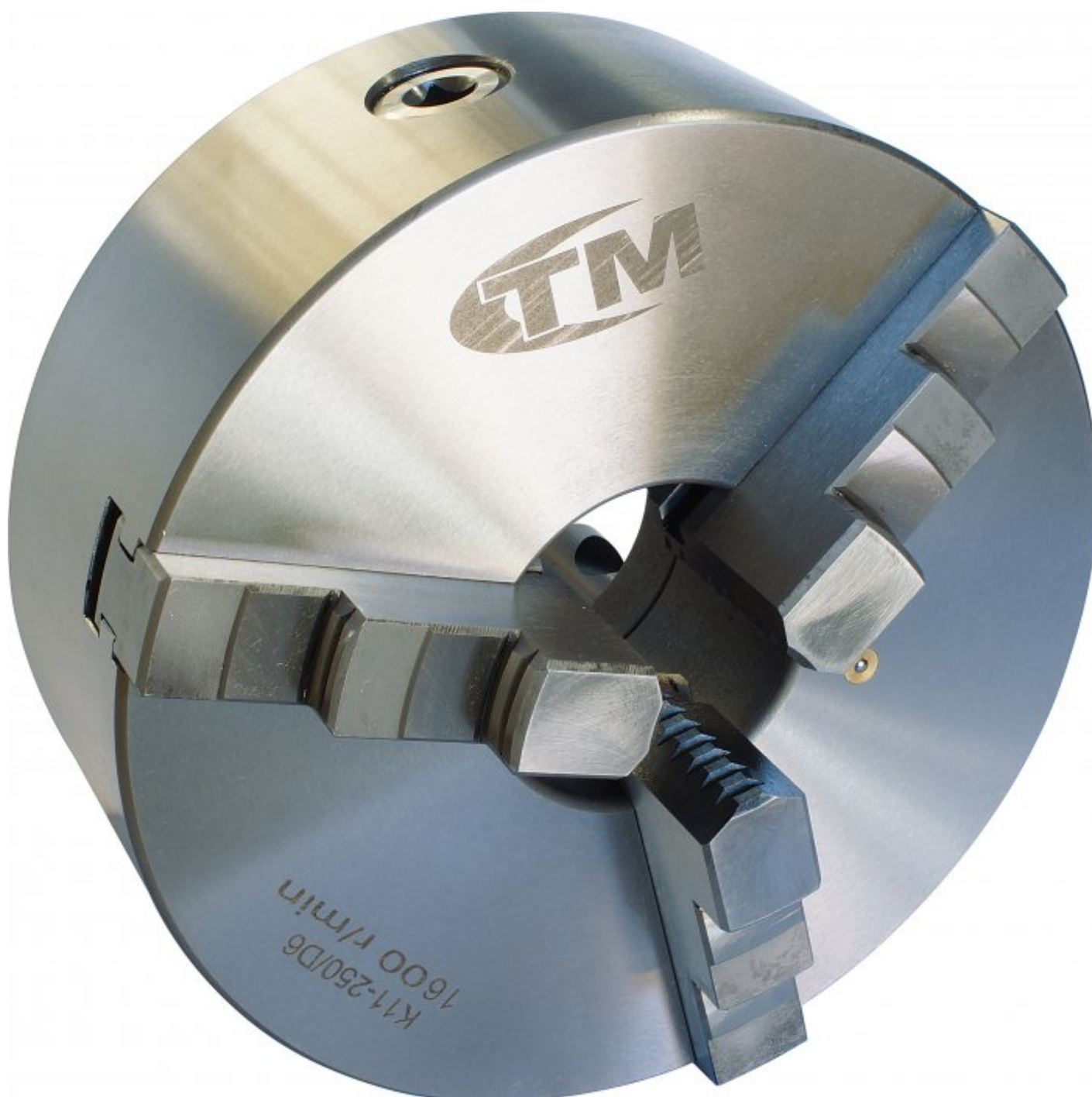




TOOLMASTER K11- 250/D16

3 Jaw Self Centring Lathe Chuck

Ø250mm



TOOLMASTER 3 Jaw Self Centring Lathe Chuck K11- 250/D16



Camlock Mount



Front



Included Accessories

Description

K11 SERIES Cast Iron Body
Standard GB/T 4346.2-2002

Features

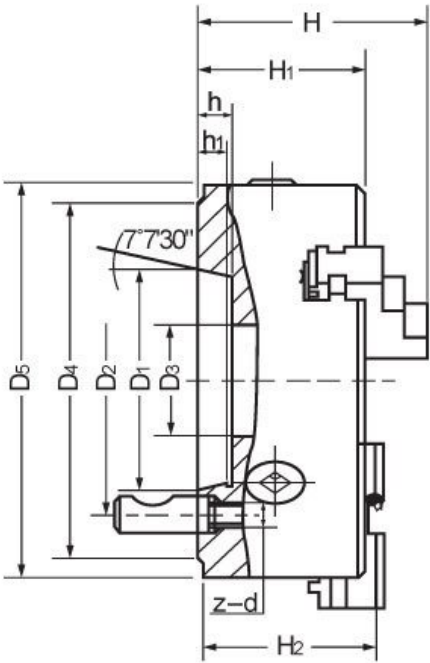
- World-class and industry leader in the manual lathe chuck field with over 30 years of manufacturing
- ToolMaster quality assurance and accuracy testing ensure standards remain high. ToolMaster is ISO 9001-2000 approved
- Each chuck is supplied with a set of inside and outside jaws and a chuck key

Includes

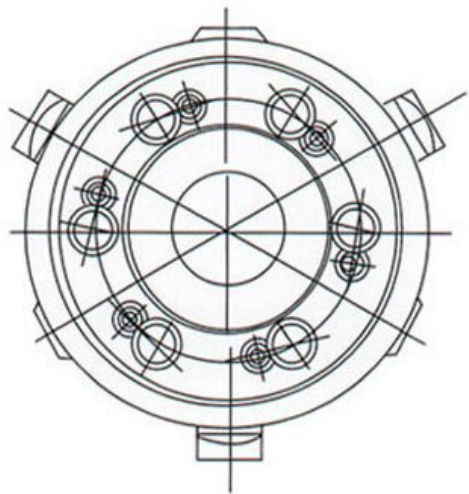
- Outside jaws
- Inside jaws
- Chuck key

Specifications

TOOLMASTER 3 Jaw Self Centring Lathe Chuck K11- 250/D16



CAMLOCK



TOOLMASTER 3 Jaw Self Centring Lathe Chuck K11- 250/D16

ORDER CODE

TOOLMASTER 3 Jaw Self Centring Lathe Chuck K11- 250/D16

C263

Chuck Size (mm)	Ø250
Camlock	D1-6
Outside Jaw (mm)	6 - 110
Inside Jaw (mm)	90 - 250
Speed (rpm)	1600
D1 (mm)	106.3
D2 (mm)	133.4
D3 (mm)	80
H (mm)	120
H1 (mm)	80
h (mm)	5
Nett Weight (kg)	26