

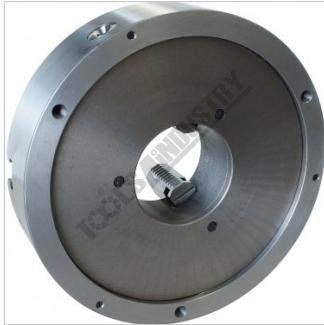
**TOOLMASTER K11 SERIES**

**3 Jaw Self Centring Lathe Chuck**

**Ø400mm**



## TOOLMASTER 3 Jaw Self Centring Lathe Chuck K11 SERIES



Back Plate Mount



Included Accessories



Front View

### Description

K11 Series cast iron body lathe chucks are built to GB/T 4346.2-2002 standard, and supplied with one piece standard and reverse jaws.

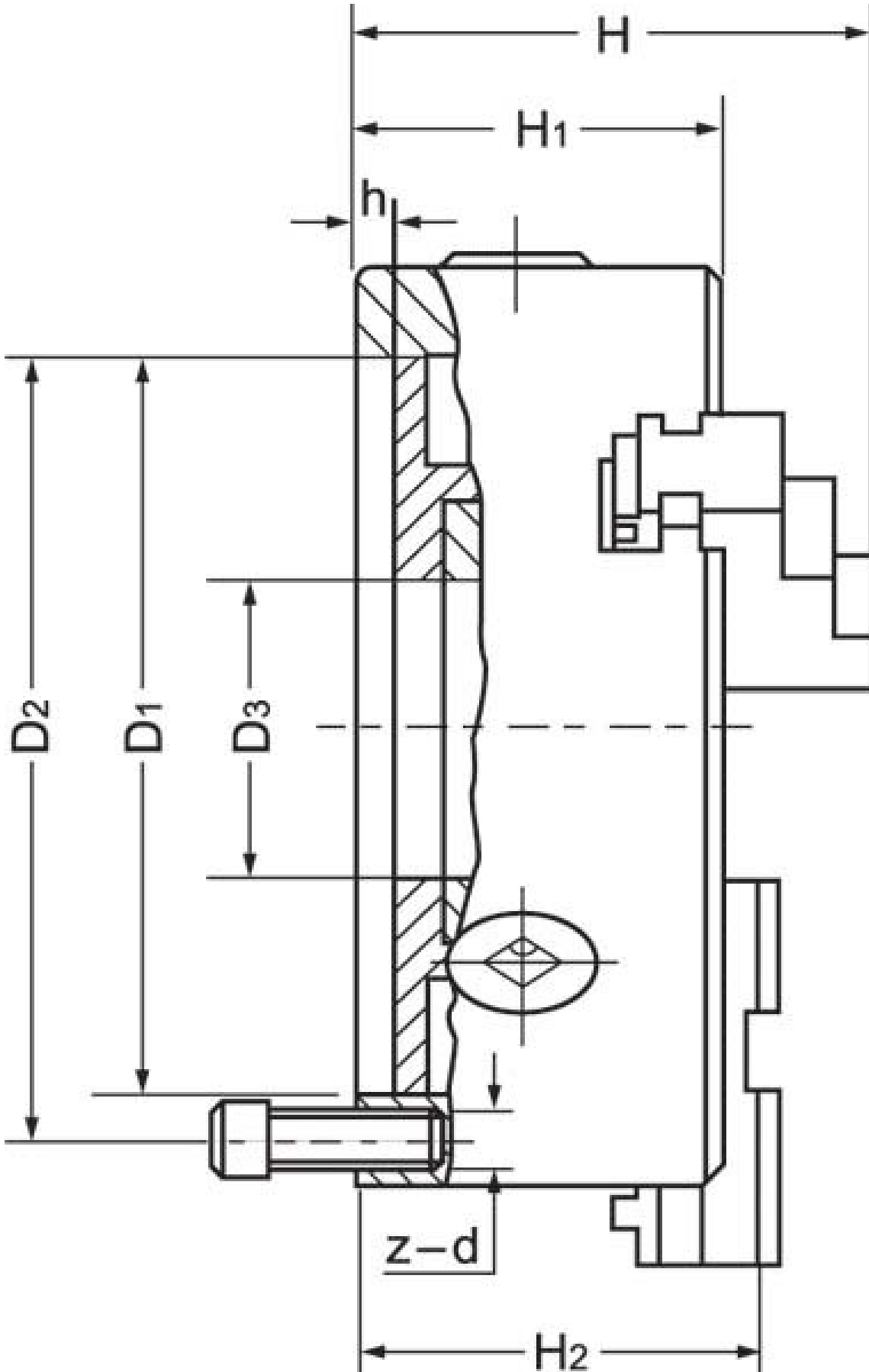
World-class and industry leader in manufacturing manual lathe chucks for over 30 years. ToolMaster precision tolerance lathe chucks are ISO 9001-2000 approved, and ensure high quality with accuracy testing on every chuck.

### Includes

- Outside jaws
- Inside jaws
- Mounting screws
- Chuck key

### Specifications

**TOOLMASTER 3 Jaw Self Centring Lathe Chuck K11 SERIES**



**TOOLMASTER 3 Jaw Self Centring Lathe Chuck K11 SERIES**

**ORDER CODE**

**TOOLMASTER 3 Jaw Self Centring Lathe Chuck K11 SERIES**

C210

<b>Mounting Type</b>	Back Plate Mount
<b>Chuck Size (mm)</b>	Ø400
<b>Outside Jaw (mm)</b>	15 - 210
<b>Inside Jaw (mm)</b>	120 - 400
<b>Speed (rpm)</b>	1000
<b>D1 (mm)</b>	340
<b>D2 (mm)</b>	368
<b>D3 (bore) (mm)</b>	145
<b>H (mm)</b>	154
<b>H1 (mm)</b>	106.5
<b>H2 (mm)</b>	~
<b>h (lowercase) (mm)</b>	6
<b>z-d (mm)</b>	3 x M16
<b>Nett Weight (kg)</b>	71