

TOOLMASTER K11 SERIES

3 Jaw Self Centring Lathe Chuck

Ø320mm



TOOLMASTER 3 Jaw Self Centring Lathe Chuck K11 SERIES



Rear View



Parts



Front View

Description

K11 Series cast iron body lathe chucks are built to GB/T 4346.2-2002 standard, and supplied with one piece standard and reverse jaws.

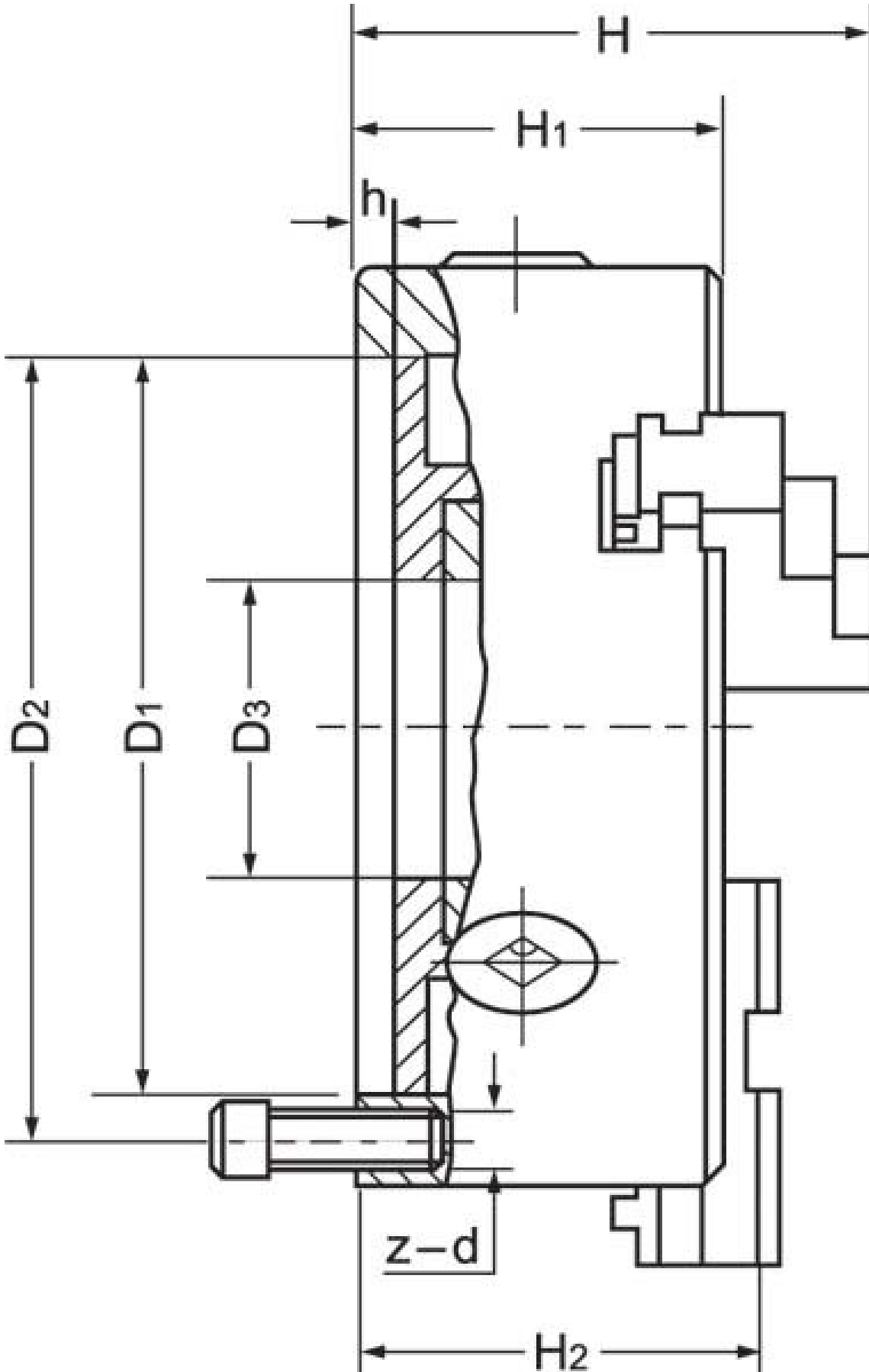
World-class and industry leader in manufacturing manual lathe chucks for over 30 years. ToolMaster precision tolerance lathe chucks are ISO 9001-2000 approved, and ensure high quality with accuracy testing on every chuck.

Includes

- Outside jaws
- Inside jaws
- Mounting screws
- Chuck key

Specifications

TOOLMASTER 3 Jaw Self Centring Lathe Chuck K11 SERIES



TOOLMASTER 3 Jaw Self Centring Lathe Chuck K11 SERIES

ORDER CODE

TOOLMASTER 3 Jaw Self Centring Lathe Chuck K11 SERIES

C208

Mounting Type	Back Plate Mount
Chuck Size (mm)	Ø320
Outside Jaw (mm)	11.5 - 165
Inside Jaw (mm)	110 - 340
Speed (rpm)	1200
D1 (mm)	270
D2 (mm)	290
D3 (bore) (mm)	100
H (mm)	142
H1 (mm)	95
H2 (mm)	~
h (lowercase) (mm)	11
z-d (mm)	3 x M16
Nett Weight (kg)	47.5