

**TOOLMASTER K11 SERIES**

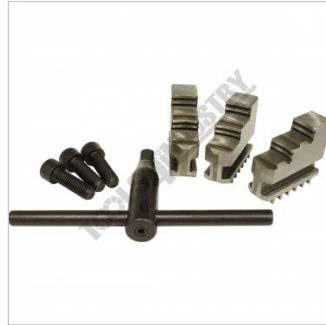
**3 Jaw Self Centring Lathe Chuck**

**Ø100mm**



**TOOLMASTER 3 Jaw Self Centring Lathe Chuck K11 SERIES**

Back Plate Mount



2 Included Accessories

**Description**

K11 Series cast iron body lathe chucks are built to GB/T 4346.2-2002 standard, and supplied with one piece standard and reverse jaws.

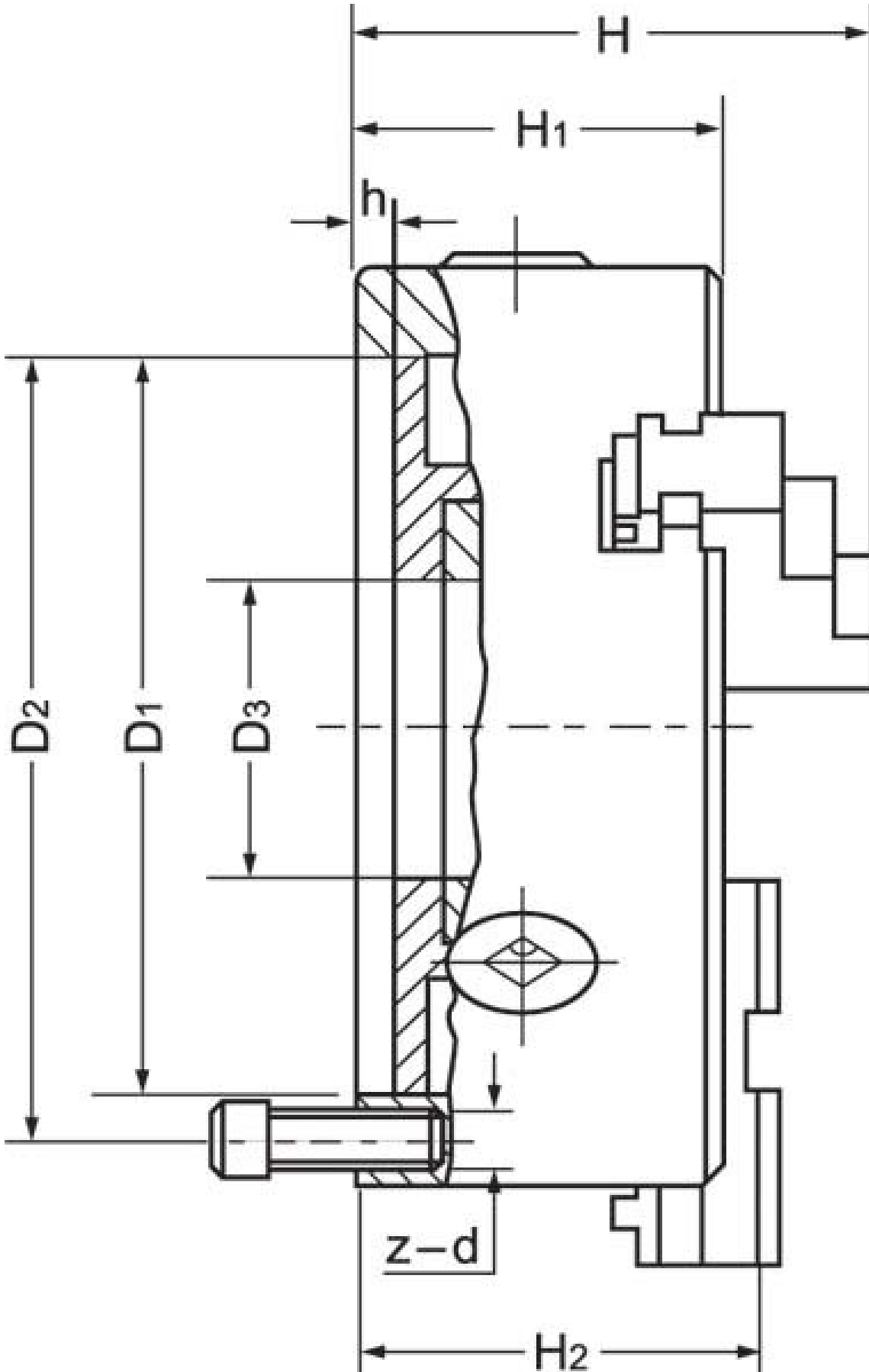
World-class and industry leader in manufacturing manual lathe chucks for over 30 years. ToolMaster precision tolerance lathe chucks are ISO 9001-2000 approved, and ensure high quality with accuracy testing on every chuck.

**Includes**

- Outside jaws
- Inside jaws
- Mounting screws
- Chuck key

**Specifications**

**TOOLMASTER 3 Jaw Self Centring Lathe Chuck K11 SERIES**



**TOOLMASTER 3 Jaw Self Centring Lathe Chuck K11 SERIES**

**ORDER CODE**

**TOOLMASTER 3 Jaw Self Centring Lathe Chuck K11 SERIES**

C200

<b>Mounting Type</b>	Back Plate Mount
<b>Chuck Size (mm)</b>	Ø100
<b>Outside Jaw (mm)</b>	2 - 30
<b>Inside Jaw (mm)</b>	30 - 80
<b>Speed (rpm)</b>	3500
<b>D1 (mm)</b>	72
<b>D2 (mm)</b>	84
<b>D3 (bore) (mm)</b>	22
<b>H (mm)</b>	74.5
<b>H1 (mm)</b>	55
<b>H2 (mm)</b>	~
<b>h (lowercase) (mm)</b>	3.5
<b>z-d (mm)</b>	3 x M8
<b>Nett Weight (kg)</b>	3.5