



TOOLMASTER NT40 x ER40

Collet Chuck NT40 x ER40

Ø3-Ø26mm



TOOLMASTER Collet Chuck NT40 x ER40 NT40 x ER40

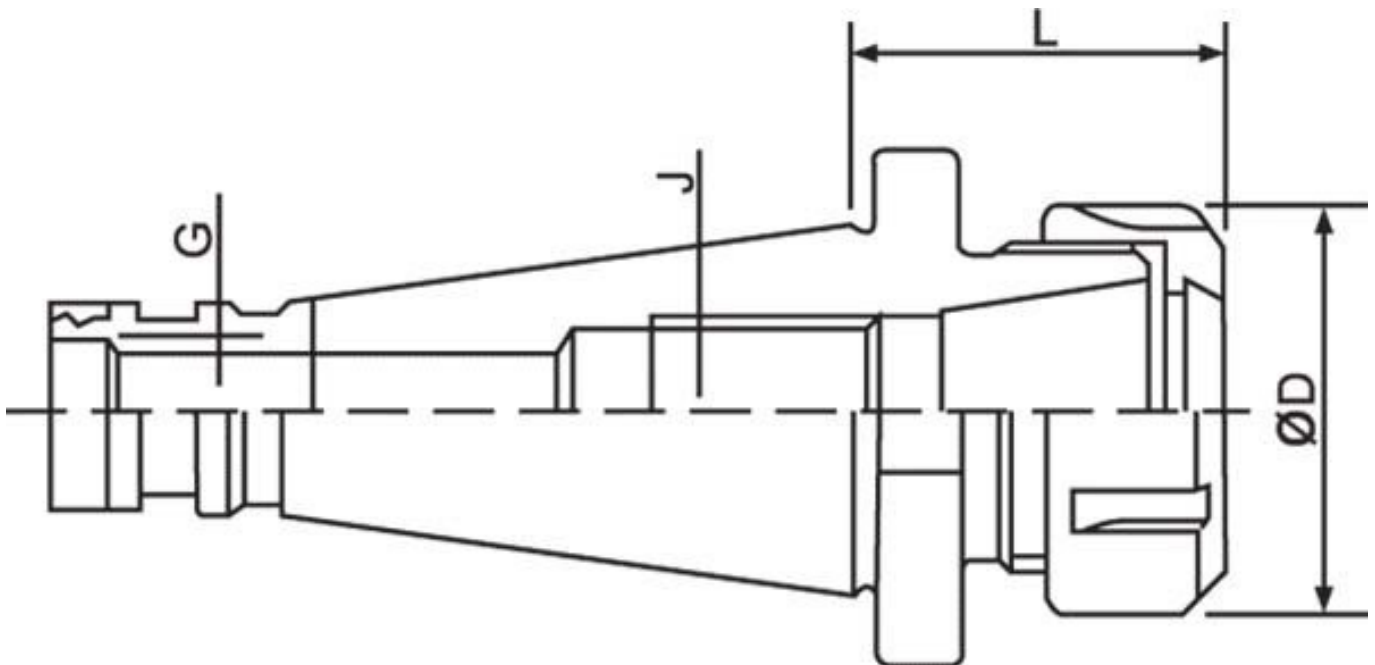
Description

All ER collet chucks meet the specifications of machine tool builders (DIN 2080 taper Shank Grade AT-3 - 85% taper contact)
 Maintain a high level of accuracy.

Features

- Precision Ground
- Ball Bearing Nut
- Rated to 10,000rpm

Specifications



ORDER CODE	C114
Collet Type	ER40
Maximum Capacity (mm)	26
Taper (J)	NT40
Draw Bar (G)	M16 x 2.0
L (mm)	60
ØD (mm)	63
Nett Weight (kg)	1.3