



**TOOLMASTER NT30 x ER40**

**Collet Chuck - NT30 x ER40**

**Ø3-Ø26mm**



**TOOLMASTER Collet Chuck - NT30 x ER40 NT30 x ER40**

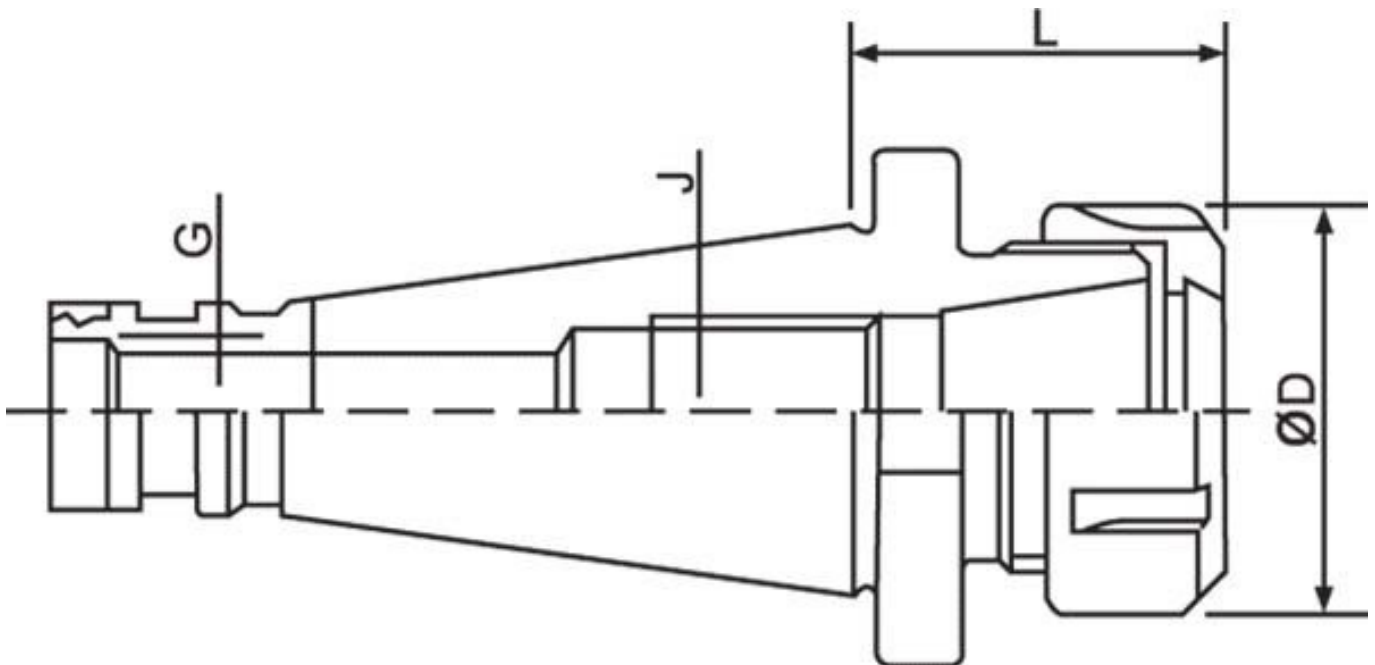
**Description**

All ER collet chucks meet the specifications of machine tool builders (DIN 2080 taper Shank Grade AT-3 - 85% taper contact)  
 Maintain a high level of accuracy.

**Features**

- Precision Ground
- Ball Bearing Nut
- Rated to 10,000rpm

**Specifications**



<b>ORDER CODE</b>	C111
<b>Collet Type</b>	ER40
<b>Maximum Capacity (mm)</b>	26
<b>Taper (J)</b>	NT30
<b>Draw Bar (G)</b>	M12 x 1.75
<b>L (mm)</b>	70
<b>ØD (mm)</b>	63
<b>Nett Weight (kg)</b>	1.0