



TOOLMASTER NT30 x ER32

Collet Chuck - NT30 x ER32

Ø2-Ø20mm



TOOLMASTER Collet Chuck - NT30 x ER32 NT30 x ER32

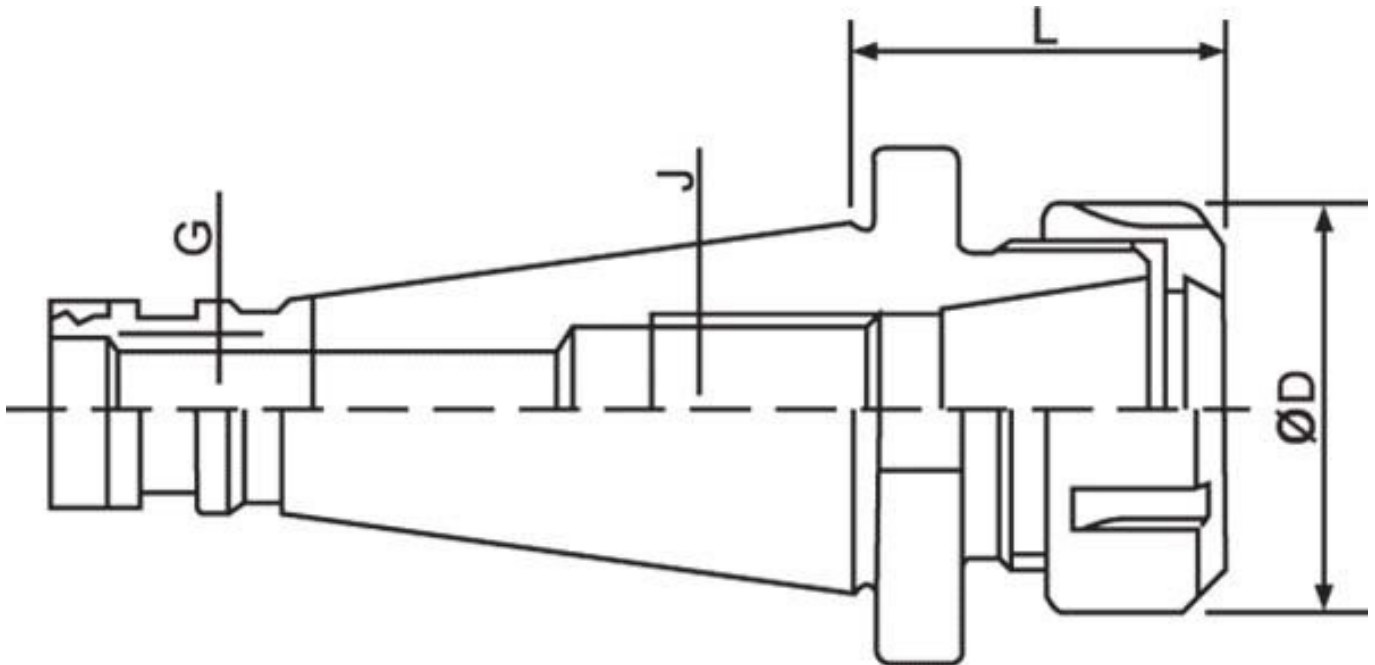
Description

All ER collet chucks meet the specifications of machine tool builders (DIN 2080 taper Shank Grade AT-3 - 85% taper contact)
 Maintain a high level of accuracy.

Features

- Precision Ground
- Rated to 10,000rpm

Specifications



ORDER CODE	C110
Collet Type	ER32
Maximum Capacity (mm)	20
Taper (J)	NT30
Draw Bar (G)	M12 x 1.75
L (mm)	55
ØD (mm)	50
Nett Weight (kg)	0.6