



TOOLMASTER 3MT x ER40

Collet Chuck - 3MT x ER40

Ø3-Ø26mm



TOOLMASTER Collet Chuck - 3MT x ER40 3MT x ER40



Top View



Shown Apart



Side View

Description

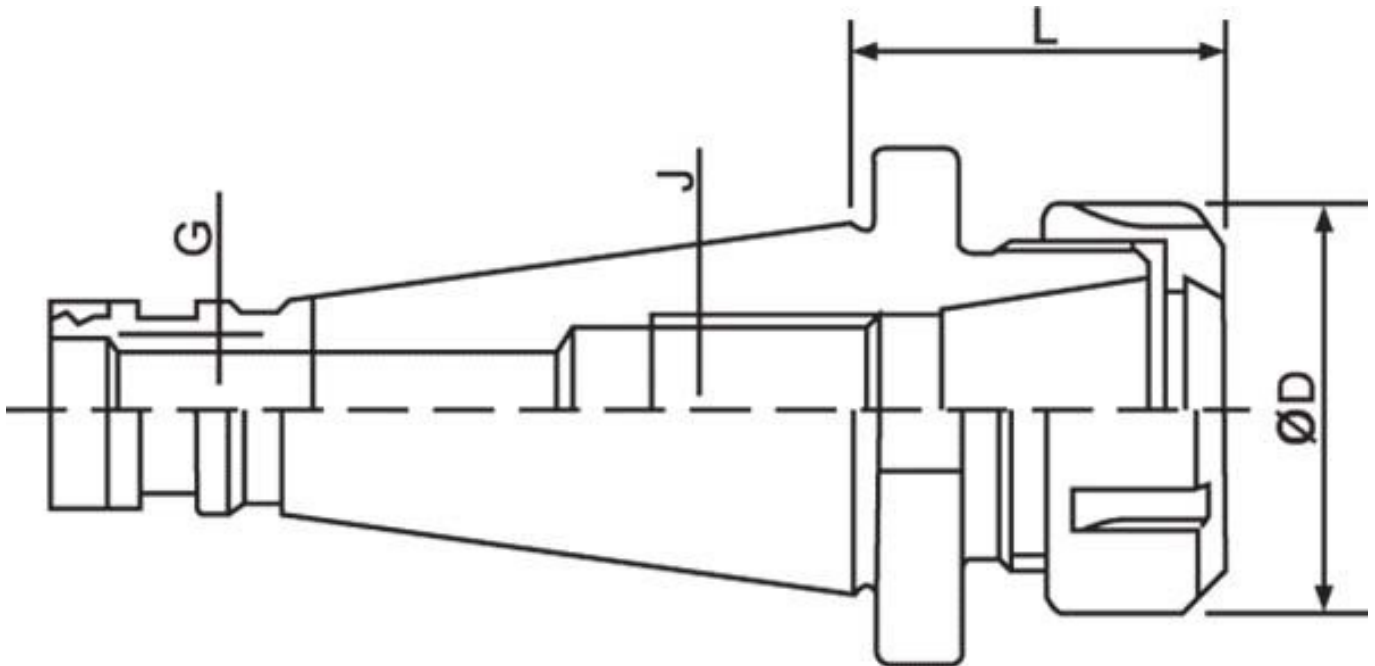
All ER collet chucks meet the specifications of machine tool builders (DIN 2080 taper Shank Grade AT-3 - 85% taper contact)

Maintain a high level of accuracy.

Features

- Precision Ground
- Rated to 10,000rpm

Specifications



ORDER CODE	C1054
Collet Type	ER40
Maximum Capacity (mm)	26
Taper (J)	3MT
Draw Bar (G)	1/2" Whitworth
L (mm)	70

TOOLMASTER Collet Chuck - 3MT x ER40 3MT x ER40

ØD (mm)	63
Nett Weight (kg)	1.3