



**TOOLMASTER 3MT x ER32**

**Collet Chuck - 3MT x ER32**

**Ø2-Ø20mm**



**TOOLMASTER Collet Chuck - 3MT x ER32 3MT x ER32**

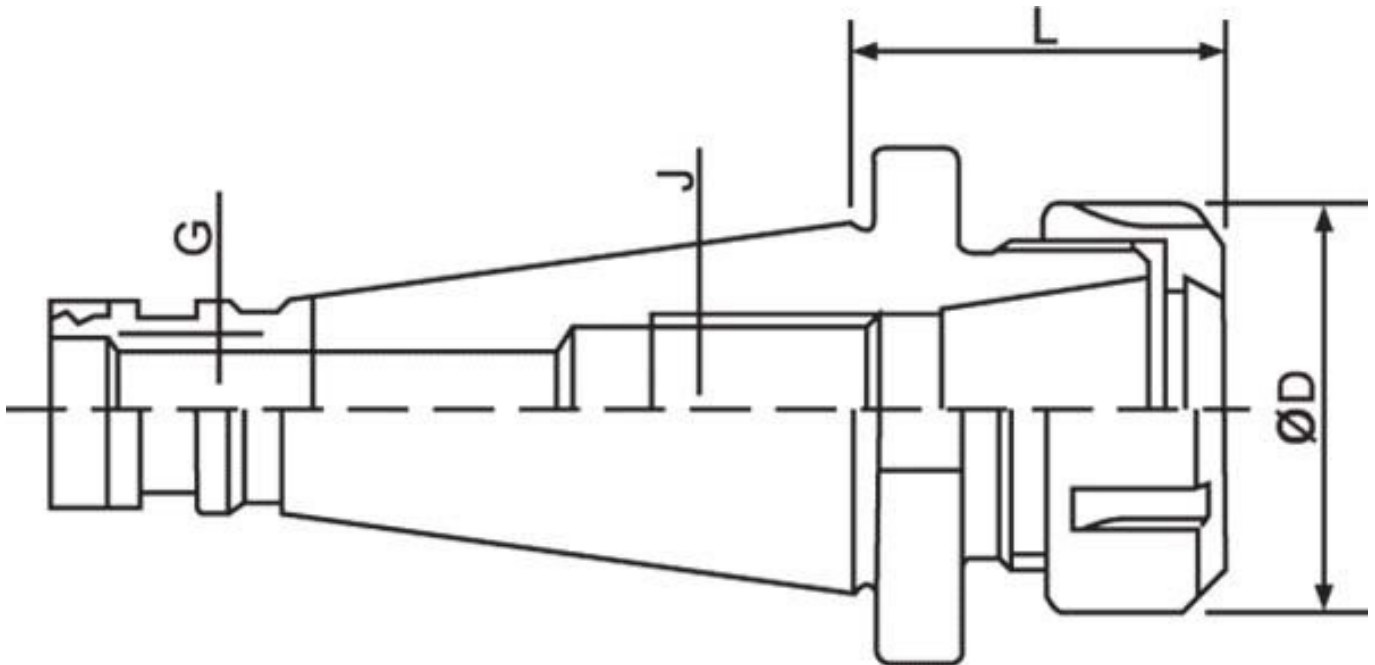
**Description**

All ER collet chucks meet the specifications of machine tool builders (DIN 2080 taper Shank Grade AT-3 - 85% taper contact)  
 Maintain a high level of accuracy.

**Features**

- Precision Ground
- Rated to 10,000rpm

**Specifications**



<b>ORDER CODE</b>	C105
<b>Collet Type</b>	ER32
<b>Maximum Capacity (mm)</b>	20
<b>Taper (J)</b>	3MT
<b>Draw Bar (G)</b>	1/2" Whitworth
<b>L (mm)</b>	50
<b>ØD (mm)</b>	50
<b>Nett Weight (kg)</b>	0.6