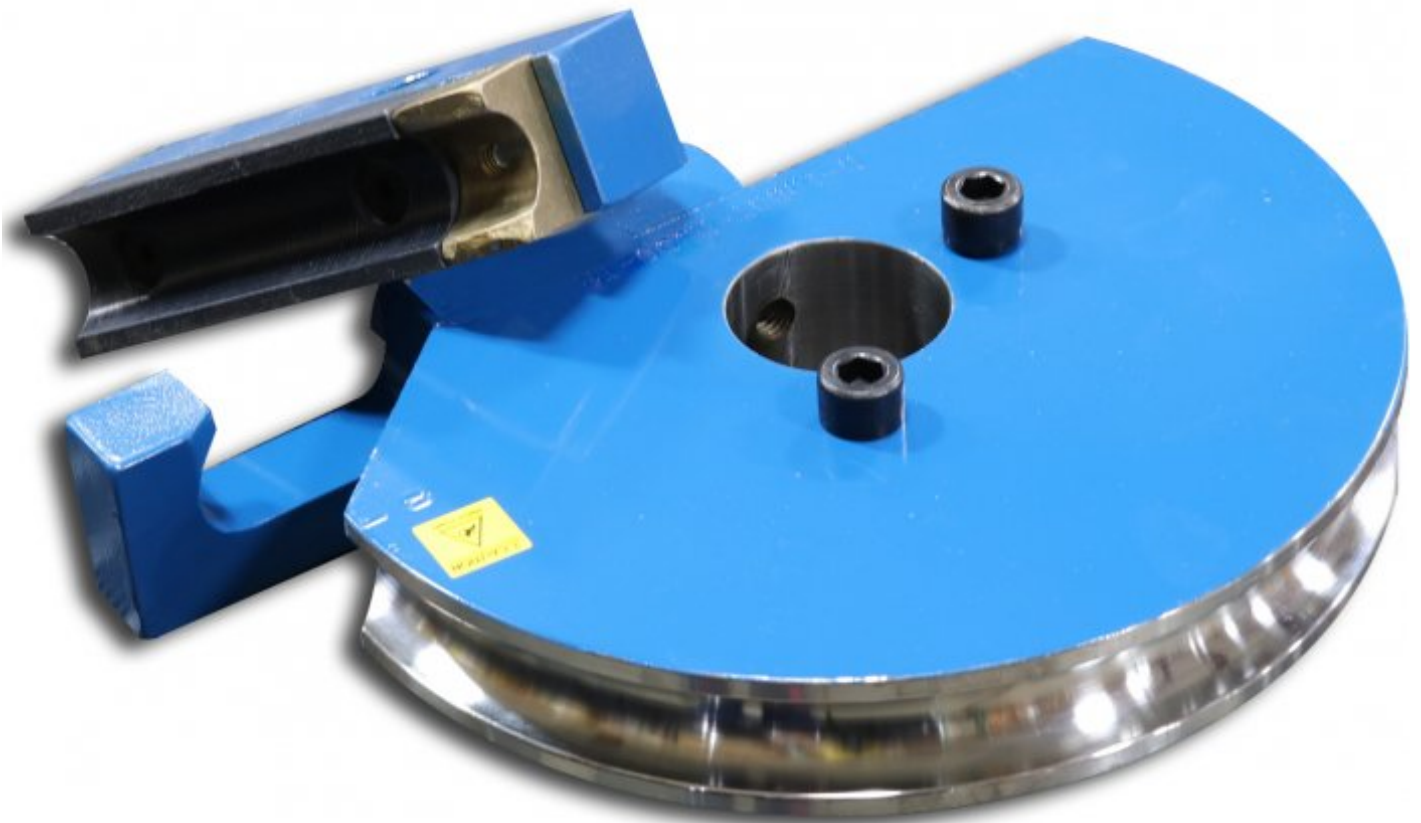


BAILEIGH DS-1250T-R400



31.75mm OD x 180° Round Tube Die Set

101.6mm CLR, Made from Steel



BAILEIGH 31.75mm OD x 180° Round Tube Die Set DS-1250T-R400

Description

31.75mm OD Round tube die set with a 101.6mm Center line Radius. Fits on all Baileigh Industrial rotary draw benders that accept drop on tooling (Not RDB-050). Center line radius is based on 2.1082mm wall thickness.

Features

- 31.75mm OD steel former with 101.6mm centre line radius for 180 degree bends
- 2.1082mm recommended minimum wall thickness
- 180 degree maximum bend angle
- Set includes forming die, counter die, and hook sleeve

Specifications

ORDER CODE	B8271
MODEL	DS-1250T-R400
Part Number	~
Type	Round Tube Die Set
Degree of Bend (Max) (Deg)	180°
Size (inch / mm)	31.75 OD
CLR - Centre Line Radius (inch / mm)	101.6
Recommended Min. Wall Thickness (inch / mm)	2.1082
Material OD (inch / mm)	~
Suits Spigot Size (inch / mm)	~
Suits Machine Model	RDB Series (Not RDB-050)
Nett Weight (kg)	13.2