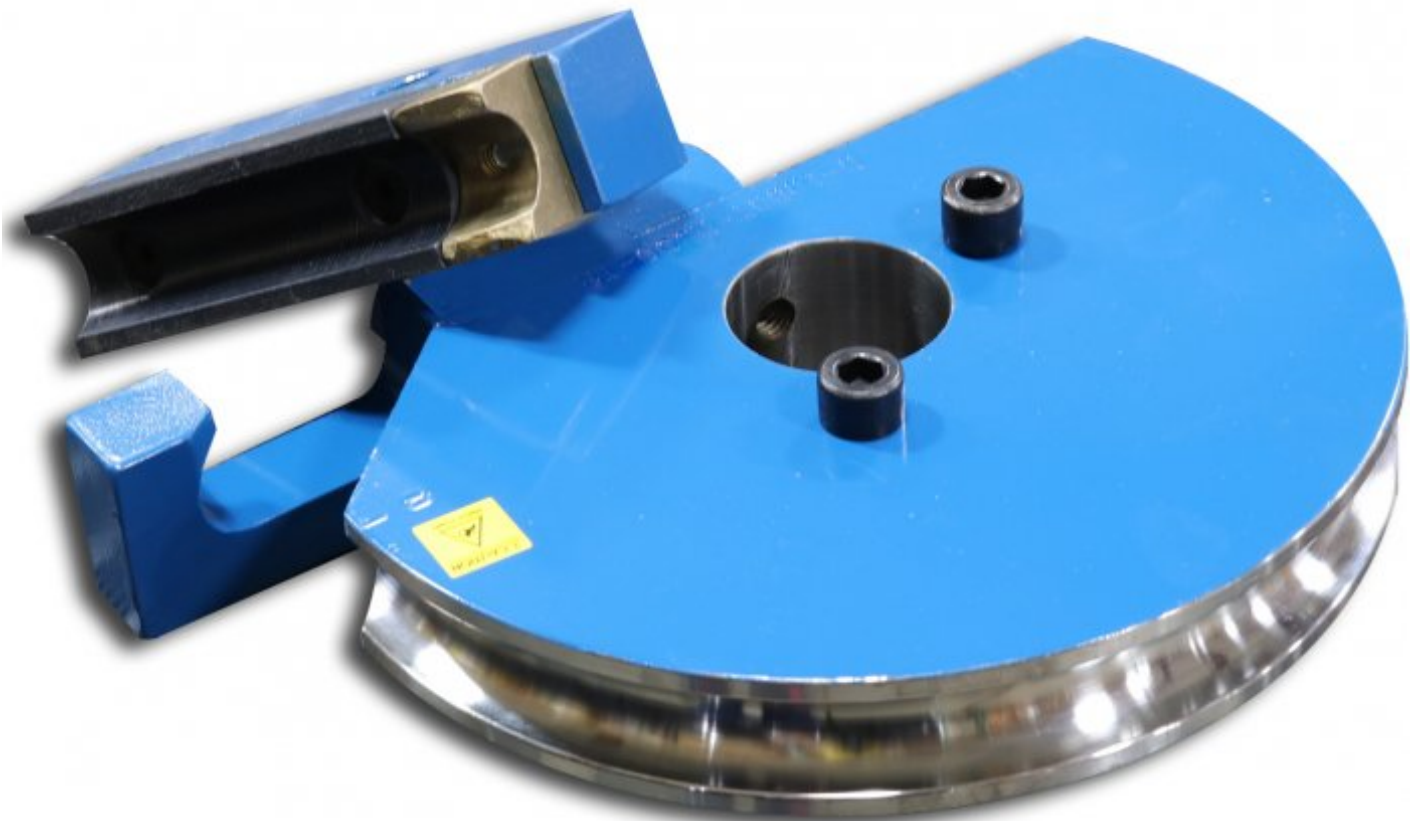


**BAILEIGH DS-1000T-R300**



**25.4mm OD x 180° Round Tube Die Set**

**76.2mm CLR, Made from Steel**



**BAILEIGH 25.4mm OD x 180° Round Tube Die Set DS-1000T-R300**

**Description**

25.4mm OD Round tube die set with a 76.2mm Center line Radius. Fits on all Baileigh Industrial rotary draw benders that accept drop on tooling (Not RDB-050). Center line radius is based on 1.4732mm wall thickness.

**Features**

- 25.4mm OD steel former with 76.2mm centre line radius for 180 degree bends
- 1.4732mm recommended minimum wall thickness
- 180 degree maximum bend angle
- Set includes forming die, counter die, and hook sleeve

**Specifications**

<b>ORDER CODE</b>	B8253
<b>MODEL</b>	DS-1000T-R300
<b>Part Number</b>	~
<b>Type</b>	Round Tube Die Set
<b>Degree of Bend (Max) (Deg)</b>	180°
<b>Size (inch / mm)</b>	25.4 OD
<b>CLR - Centre Line Radius (inch / mm)</b>	76.2
<b>Recommended Min. Wall Thickness (inch / mm)</b>	1.4732
<b>Material OD (inch / mm)</b>	~
<b>Suits Spigot Size (inch / mm)</b>	~
<b>Suits Machine Model</b>	RDB Series (Not RDB-050)
<b>Nett Weight (kg)</b>	10