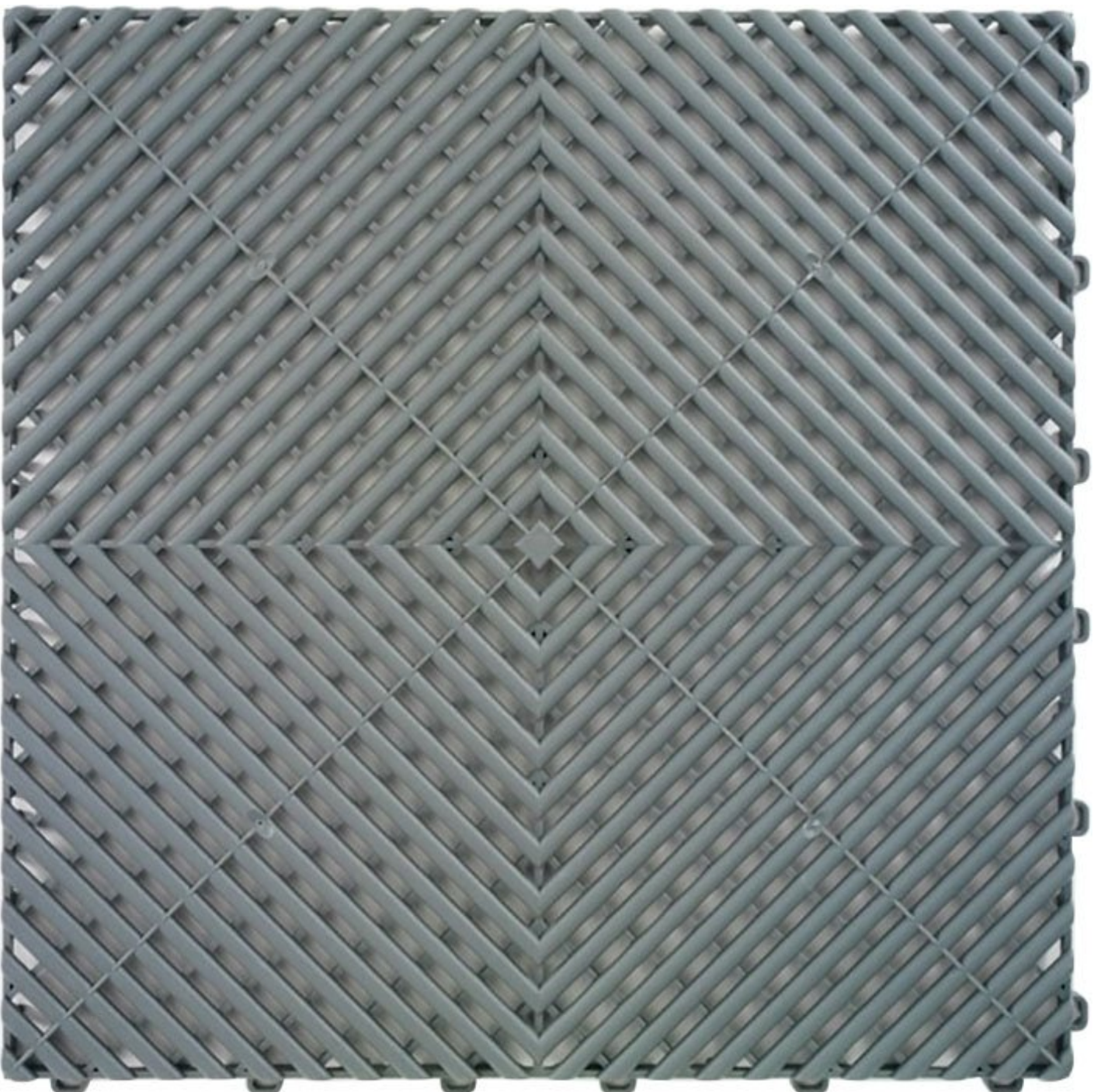


HAFCO Grey

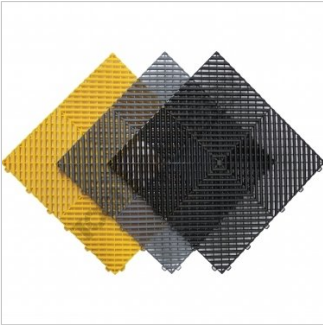


Industrial Flooring Tiles - Workshop

QTY 25 Per Pack



HAFCO Industrial Flooring Tiles - Workshop Grey



Range of Colours Available



Shown How Optional Edges Clip Together



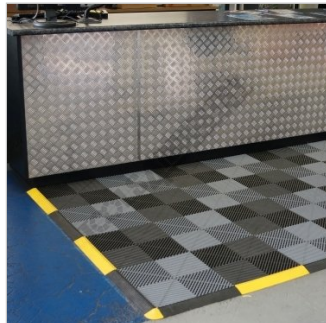
Close Up on Edge



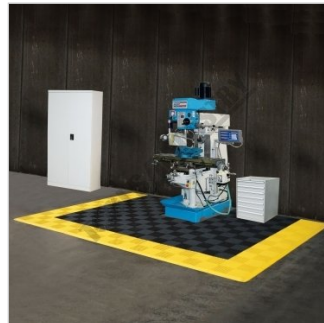
Used in a Wet Area



Workshop



Shown being Used in Front of Counter



Shown Being Used with a Milling Machine



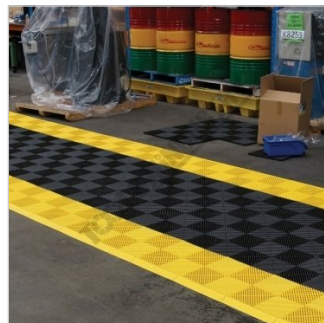
Shown with Lathe



Create your own Size Mat



Yellow Edge Mat



Yellow Edge Path

Description

Floor tiles available in Black, Grey & Yellow colours

A popular flooring solution where drainage and ventilation are required. In those situations these ventilated industrial tiles can be installed to allow the underlying surface to dry. The ribbed pattern interlocking tiles are oil resistant and can withstand heavy loads in the garage, warehouse or workshop floors.

NOTE: Not suitable for sulphuric or hydrochloric acid

HAFCO Industrial Flooring Tiles - Workshop Grey

Features

- Made from grey high-impact polymer plastic
- Ventilated tile design for fluids to escape through
- Great for covering up floor imperfections such as cracks or stains
- Easy to assemble by simply connecting and snap lock together
- Square grid pattern, helps prevent accidental slips
- Can be cut to fit around difficult objects with a saw
- Resistant to oils & automotive fluids
- Each tile when connected is secured in place by 24 locking points

Includes

- 25 Grey tiles per pack to cover 4 square metres

Specifications

ORDER CODE	M781
Type	Tiles
Quantity Per Pack (No.)	25
Colour	Grey
Tile Floor Covering (m2)	4
Size (L x W x H) (mm)	400 x 400 x 18